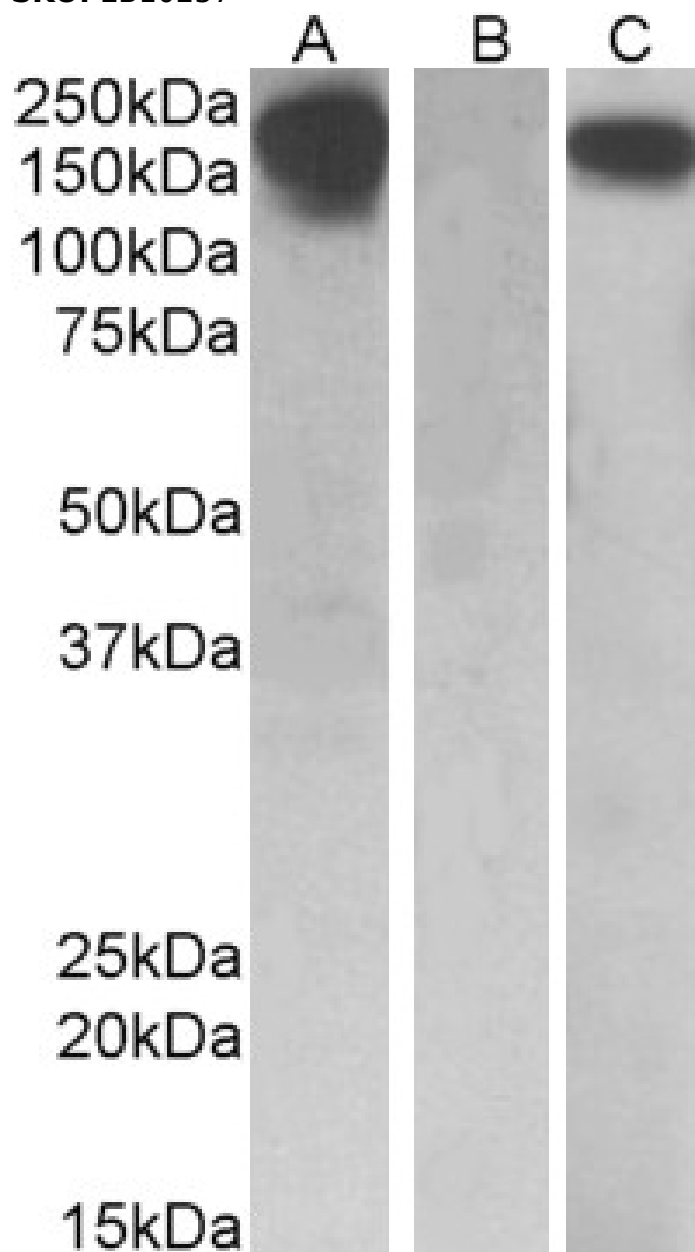


## GOAT ANTI-CSF1R (AA 700-710) ANTIBODY

SKU: EB10257



## SPECIFICATIONS

<b>Formulation</b>	Supplied at 0.5 mg/ml in Tris saline, 0.02% sodium azide, pH7.3 with 0.5% bovine serum albumin.
<b>Unit Size</b>	100 µg
<b>Storage Instructions</b>	Aliquot and store at -20°C. Minimize freezing and thawing.
<b>Synonym / Alias Names</b>	CSF1R McDonough feline sarcoma viral (v-fms) oncogene homolog macrophage colony stimulating factor 1 receptor FMS proto-oncogene FMS FIM2 CSFR colony stimulating factor 1 receptor C-FMS CD115 antigen CD115
<b>Accession ID</b>	NP_005202.2
<b>Blocking Peptide</b>	EBP10257
<b>Immunogen</b>	Peptide with sequence C-KNIHLEKKYVR, from the internal region of the protein sequence according to NP_005202.2.
<b>Peptide Sequence</b>	C-KNIHLEKKYVR
<b>Purification Method</b>	Purified from goat serum by ammonium sulphate precipitation followed by antigen affinity chromatography using the immunizing peptide.
<b>Shipping Instructions</b>	Refrigerated
<b>Predicted Species</b>	Human, Mouse, Rat, Dog, Cow
<b>Reactive Species</b>	Human
<b>Human Gene ID</b>	1436
<b>Mouse Gene ID</b>	12978
<b>Rat Gene ID</b>	307403
<b>Product Grade</b>	<a href="https://prod-vector-labs-pimcore-assets.s3.us-east-1.amazonaws.com/assets/products/image/elite_medium.png">https://prod-vector-labs-pimcore-assets.s3.us-east-1.amazonaws.com/assets/products/image/elite_medium.png</a>
<b>ELISA Detection Limit</b>	Antibody detection limit dilution 1:32000.
<b>Western Blot</b>	In transfected HEK293 transiently expressing full-length Human CSF1R (myc and DYKDDDDK tagged), a band of approx. 200kDa was observed. No bands were observed in mock-transfected HEK293 and the same band was observed using anti-myc tag antibody. Recommended concentration, 0.1-0.5µg/ml.
<b>Application Type</b>	Pep-ELISA, WB-Trf

## DOCUMENTS

- [Data Sheet](#)

## GALLERY IMAGES

