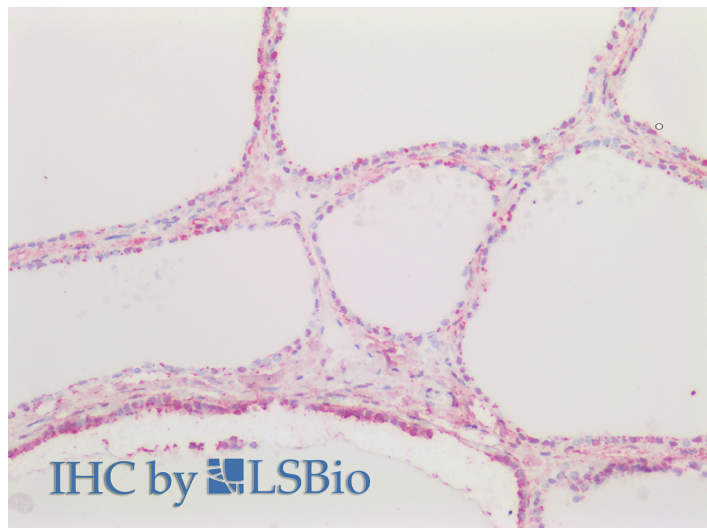


# GOAT ANTI-CTGF (AA111-123) ANTIBODY

SKU: EB11761



## SPECIFICATIONS

**Formulation** Supplied at 0.5 mg/ml in Tris saline, 0.02% sodium azide, pH7.3 with 0.5% bovine serum albumin.

**Unit Size** 100 µg

**Storage Instructions** Aliquot and store at -20°C. Minimize freezing and thawing.

**Synonym / Alias Names** NOV2|OTTHUMP00000017213|MGC102839|insulin-like growth factor-binding protein 8|IGFBP-8|IGFBP8|IGF-binding protein 8|IBP-8|hypertrophic chondrocyte-specific protein 24|HCS24|CTGF|connective tissue growth factor|CCN2|CCN family member 2

**Usage Summary** <strong>Immunofluorescence:</strong> Strong expression of the protein seen in the cytoplasm of HepG2 and NIH3T3 cells. Recommended concentration: 10µg/ml.

**Accession ID** NP\_001892.1

**Blocking Peptide** EBP11761

**Immunogen** Peptide with sequence RSGESFQSSCKYQ, from the internal region of the protein sequence according to NP\_001892.1.

**Peptide Sequence** RSGESFQSSCKYQ

**Purification Method** Purified from goat serum by ammonium sulphate precipitation followed by antigen affinity chromatography using the immunizing peptide.

<b>Shipping Instructions</b>	Refrigerated
<b>Predicted Species</b>	Human, Mouse, Rat, Dog, Pig, Cow
<b>Reactive Species</b>	Human, Mouse
<b>Human Gene ID</b>	1490
<b>Mouse Gene ID</b>	14219
<b>Rat Gene ID</b>	64032
<b>Product Grade</b>	<a href="https://prod-vector-labs-pimcore-assets.s3.us-east-1.amazonaws.com/assets/products/image/elite_medium.png">https://prod-vector-labs-pimcore-assets.s3.us-east-1.amazonaws.com/assets/products/image/elite_medium.png</a>
<b>IHC Results</b>	Paraffin embedded Human Thyroid. Recommended concentration: 5µg/ml.
<b>ELISA</b>	
<b>Detection Limit</b>	Antibody detection limit dilution 1:16000.
<b>Application Type</b>	Pep-ELISA, IF, IHC

## DOCUMENTS

- [Data Sheet](#)

## GALLERY IMAGES

