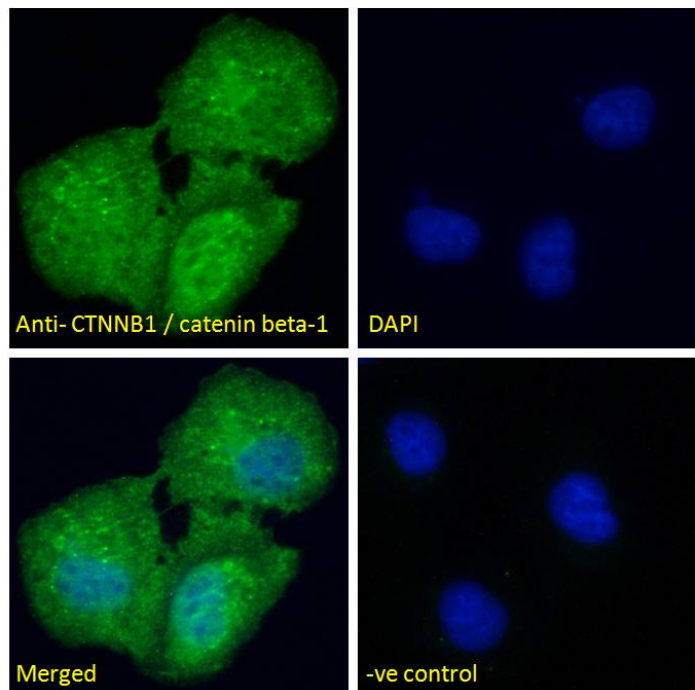


GOAT ANTI-CTNNB1 / CATENIN BETA-1 (AA108-121) ANTIBODY

SKU: EB12543



SPECIFICATIONS

Formulation Supplied at 0.5 mg/ml in Tris saline, 0.02% sodium azide, pH7.3 with 0.5% bovine serum albumin.

Unit Size 100 µg

Storage Instructions Aliquot and store at -20°C. Minimize freezing and thawing.

Synonym /

Alias catenin beta-1|armadillo|MRD19|CTNNB|catenin (cadherin-associated protein), beta 1, 88kDa|CTNNB1

Names

Usage Summary **Immunofluorescence:** Expression of the protein seen in the cytoplasm/Plasma Membrane of U2OS cells. Recommended concentration: 10µg/ml.

Accession ID NP_001895.1

Blocking Peptide EBP12543

Immunogen	Peptide with sequence C-QIPSTQFDAAHPTN, from the internal region of the protein sequence according to NP_001895.1.
Product Comments	Reported variants represent identical protein: NP_001091679.1, NP_001895.1, NP_001091680.1.
Peptide Sequence	C-QIPSTQFDAAHPTN
Purification Method	Purified from goat serum by ammonium sulphate precipitation followed by antigen affinity chromatography using the immunizing peptide.
Shipping Instructions	Refrigerated
Predicted Species	Human, Mouse, Rat, Dog, Pig, Cow
Reactive Species	Human
Human Gene ID	1499
Mouse Gene ID	12387
Rat Gene ID	84353
Product Grade	https://prod-vector-labs-pimcore-assets.s3.us-east-1.amazonaws.com/assets/products/image/elite_plus_medium.png
IHC Results	Paraffin embedded Human Adrenal Gland. Recommended concentration: 5µg/ml.
ELISA	
Detection Limit	Antibody detection limit dilution 1:128000.
Western Blot	Approx 100kDa band observed in lysates of cell line HeLa (calculated MW of 85.5kDa according to NP_001895.1). Recommended concentration: 0.3-1µg/ml. Primary incubation 1 hour at room temperature..
Application Type	Pep-ELISA, WB, IHC, IF

DOCUMENTS

- [Data Sheet](#)

GALLERY IMAGES

