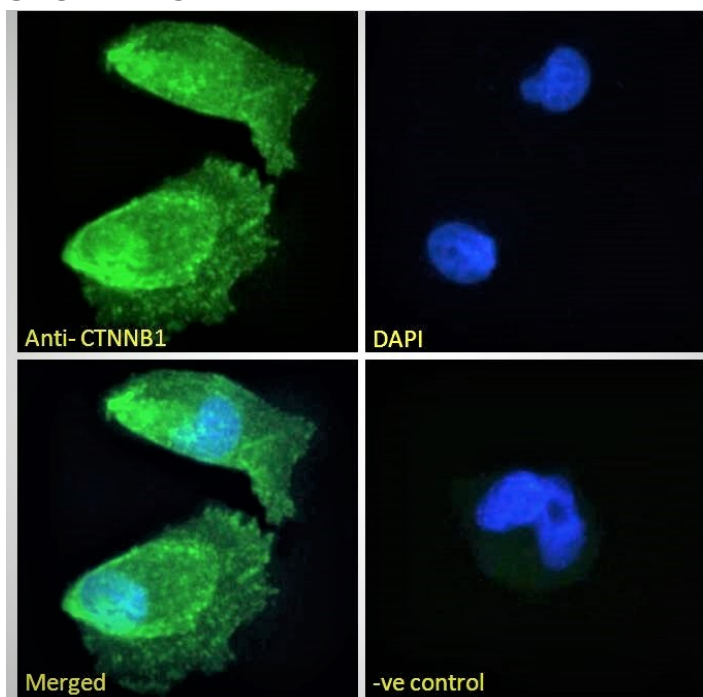


GOAT ANTI-CTNNB1 / CATENIN BETA-1 ANTIBODY

SKU: EB12542



SPECIFICATIONS

Formulation Supplied at 0.5 mg/ml in Tris saline, 0.02% sodium azide, pH7.3 with 0.5% bovine serum albumin.

Unit Size 100 µg

Storage Instructions Aliquot and store at -20°C. Minimize freezing and thawing.

Synonym /

Alias Names catenin beta-1|armadillo|MRD19|CTNNB|catenin (cadherin-associated protein), beta 1, 88kDa|CTNNB1

Usage Summary **Immunofluorescence:** Strong expression of the protein seen in the cytoplasm and membranes of U251 and A431 cells. Recommended concentration: 10µg/ml. **Flow Cytometry:** Flow cytometric analysis of U251 cells. Recommended concentration: 10ug/ml.

Accession ID NP_001895.1; NP_001317658.1

Blocking Peptide EBP12542

Immunogen Peptide with sequence ETARCTAGTLHNLS, from the internal region of the protein sequence according to NP_001895.1; NP_001317658.1.

Product Comments	Reported variants represent identical protein: NP_001091679.1, NP_001895.1, NP_001091680.1.
Peptide Sequence	ETARCTAGTLHNLS
Purification Method	Purified from goat serum by ammonium sulphate precipitation followed by antigen affinity chromatography using the immunizing peptide.
Shipping Instructions	Refrigerated
Predicted Species	Human, Mouse, Rat, Dog, Pig, Cow
Reactive Species	Human
Human Gene ID	1499
Mouse Gene ID	12387
Rat Gene ID	84353
Product Grade	https://prod-vector-labs-pimcore-assets.s3.us-east-1.amazonaws.com/assets/products/image/elite_plus_medium.png
ELISA Detection Limit	Antibody detection limit dilution 1:128000.
Western Blot	Approx 90kDa band observed in A431 cell lysates-and in preliminary testing of CACO2 cell lysate (calculated MW of 85.5kDa according to NP_001895.1). This molecular weight is routinely observed by other sources. Recommended concentration: 0.1-0.3µg/ml. Primary incubation 1 hour at room temperature.
Application Type	Pep-ELISA, WB, IF, FC

GALLERY IMAGES

