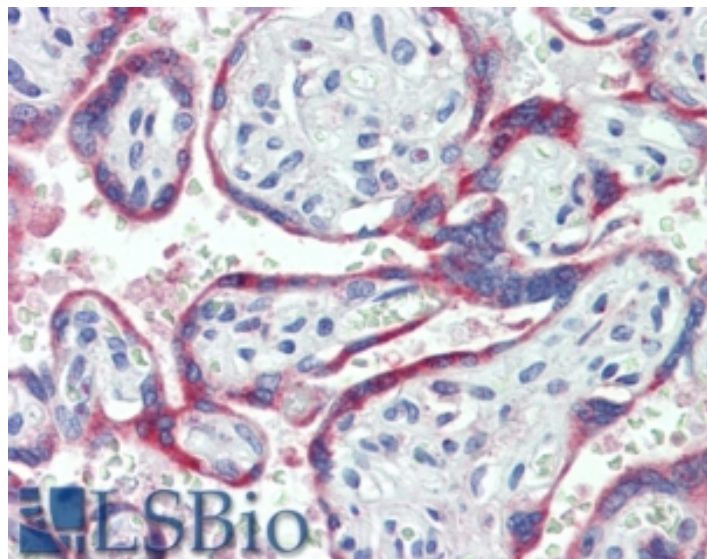


GOAT ANTI-CYBB / GP91-PHOX ANTIBODY

SKU: EB08891



SPECIFICATIONS

Formulation Supplied at 0.5 mg/ml in Tris saline, 0.02% sodium azide, pH7.3 with 0.5% bovine serum albumin.

Unit Size 100 µg

Storage Instructions Aliquot and store at -20°C. Minimize freezing and thawing.

Synonym / Alias Names cytochrome b-245, beta polypeptide|NOX2|GP91PHOX|GP91-PHOX|GP91-1|CGD|cytochrome b-245, beta polypeptide (chronic granulomatous disease)|CYBB

Accession ID NP_000388.2

Blocking Peptide EBP08891

Immunogen Peptide with sequence C-SYLNFAKRIKNP, from the internal region of the protein sequence according to NP_000388.2.

Peptide Sequence C-SYLNFAKRIKNP

Purification Method Purified from goat serum by ammonium sulphate precipitation followed by antigen affinity chromatography using the immunizing peptide.

Shipping Instructions Refrigerated

Predicted Species	Human, Dog
Reactive Species	Human
Human Gene ID	1536
Product Grade	https://prod-vector-labs-pimcore-assets.s3.us-east-1.amazonaws.com/assets/products/image/elite_medium.png
IHC Results	In paraffin embedded Human Placenta shows staining of syncytiotrophoblasts. Recommended concentration, 1-2µg/ml.
ELISA	
Detection Limit	Antibody detection limit dilution 1:64000.
Application Type	Pep-ELISA, IHC

DOCUMENTS

- [Data Sheet](#)

GALLERY IMAGES

