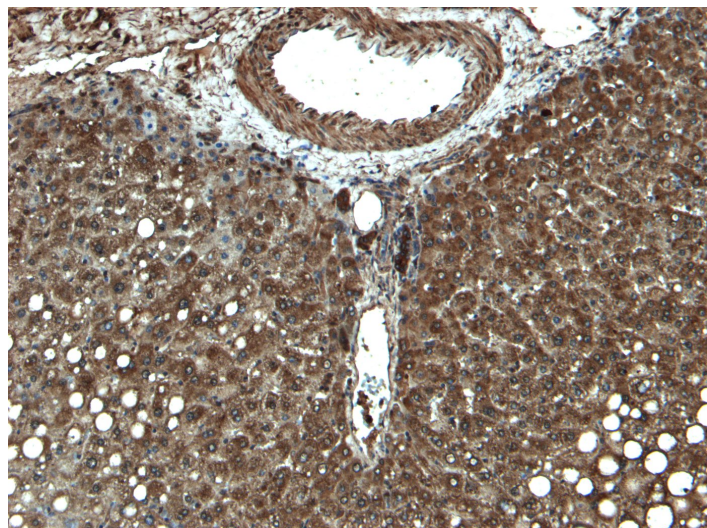


# GOAT ANTI-CYP3A4 ANTIBODY

**SKU:** EB07194



## SPECIFICATIONS

**Formulation** Supplied at 0.5 mg/ml in Tris saline, 0.02% sodium azide, pH7.3 with 0.5% bovine serum albumin.

**Unit Size** 100 µg

**Storage Instructions** Aliquot and store at -20°C. Minimize freezing and thawing.

**Synonym / Alias Names** nifedipine oxidase|glucocorticoid-inducible P450|cytochrome P450, subfamily IIIA, polypeptide 4|cytochrome P450, subfamily IIIA (nifedipine oxidase), polypeptide 4|cytochrome P450, subfamily IIIA (nifedipine oxidase), polypeptide 3|P450-III, steroid inducible|P450PCN1|P450C3|NF-25|HLP|CYP3A3|CYP3A|CP34|CP33|HGNC:2637|cytochrome P450, family 3, subfamily A, polypeptide 4|CYP3A4

**Usage Summary** **Flow Cytometry:** Flow cytometric analysis of HepG2 cells. Recommended concentration: 10ug/ml.

**Accession ID** NP\_059488.2; NP\_001189784.1

**Blocking Peptide** EBP07194

**Immunogen** Peptide with sequence C-KESRLEDTQKHR, from the internal region of the protein sequence according to NP\_059488.2; NP\_001189784.1.

**Product Comments** This antibody is expected to recognise both reported isoforms (NP\_059488.2; NP\_001189784.1) and it is not expected to cross-react with 3A5, 3A7 or 3A43.

<b>Peptide Sequence</b>	C-KESRLEDTQKHR
<b>Purification Method</b>	Purified from goat serum by ammonium sulphate precipitation followed by antigen affinity chromatography using the immunizing peptide.
<b>Shipping Instructions</b>	Refrigerated
<b>Predicted Species</b>	Human
<b>Reactive Species</b>	Human
<b>Human Gene ID</b>	1576
<b>Product Grade</b>	<a href="https://prod-vector-labs-pimcore-assets.s3.us-east-1.amazonaws.com/assets/products/image/elite_medium.png">https://prod-vector-labs-pimcore-assets.s3.us-east-1.amazonaws.com/assets/products/image/elite_medium.png</a>
<b>IHC Results</b>	Paraffin embedded Human Liver. Recommended concentration: 5-7µg/ml.
<b>ELISA</b>	
<b>Detection Limit</b>	Antibody detection limit dilution 1:8000.
<b>Application Type</b>	Pep-ELISA, IHC, FC

## DOCUMENTS

- [Data Sheet](#)

## GALLERY IMAGES

