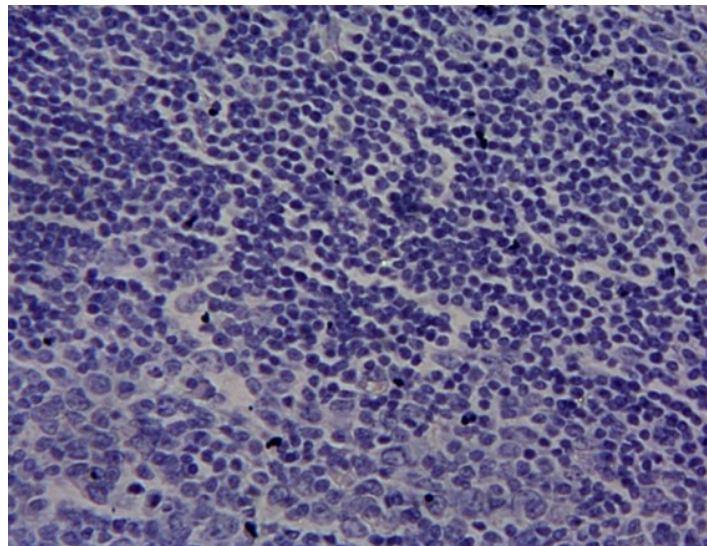


# GOAT ANTI-CYTOCHROME P450 1A1 (MOUSE) ANTIBODY

**SKU:** EB11173



## SPECIFICATIONS

<b>Formulation</b>	Supplied at 0.5 mg/ml in Tris saline, 0.02% sodium azide, pH7.3 with 0.5% bovine serum albumin.
<b>Unit Size</b>	100 µg
<b>Storage Instructions</b>	Aliquot and store at -20°C. Minimize freezing and thawing.
<b>Synonym / Alias</b>	cyp1a1  P450-1  cytochrome P450-P1  cytochrome P450, family 1, subfamily A, polypeptide 1  cytochrome P450, 1a1, aromatic compound inducible  cytochrome P450 subfamily I, polypeptide 1  cytochrome P450 family 1
<b>Names</b>	subfamily a polypeptide 2  cytochrome P450 1A1  CYP1A1  Cyp1a2  CP11  aromatic compound inducible  AHRR  AHH
<b>Usage</b>	<strong>Immunofluorescence:</strong> Strong expression of the protein seen in the ER and cytoplasm of NIH3T3
<b>Summary</b>	cells. Recommended concentration: 10µg/ml.
<b>Accession ID</b>	NP_001129531.1
<b>Blocking Peptide</b>	EBP11173
<b>Immunogen</b>	Peptide with sequence C-QDRKLDENANVQLSD, from the internal region of the protein sequence according to NP_001129531.1.
<b>Product Comments</b>	This antibody is not expected to cross-react with the similar P450 1A2

<b>Peptide Sequence</b>	C-QDRKLDENANVQLSD
<b>Purification Method</b>	Purified from goat serum by ammonium sulphate precipitation followed by antigen affinity chromatography using the immunizing peptide.
<b>Shipping Instructions</b>	Refrigerated
<b>Predicted Species</b>	Mouse, Rat
<b>Reactive Species</b>	Human, Mouse, Rat
<b>Mouse Gene ID</b>	13076
<b>Rat Gene ID</b>	24296
<b>Product Grade</b>	<a href="https://prod-vector-labs-pimcore-assets.s3.us-east-1.amazonaws.com/assets/products/image/elite_plus_medium.png">https://prod-vector-labs-pimcore-assets.s3.us-east-1.amazonaws.com/assets/products/image/elite_plus_medium.png</a>
<b>IHC Results</b>	Paraffin embedded Human Tonsil. Recommended concentration: 10µg/ml.
<b>ELISA</b>	
<b>Detection Limit</b>	Antibody detection limit dilution 1:64000.
<b>Western Blot</b>	Approx 55kDa band observed in Human and Rat Lung lysates (calculated MW of 58.2kDa according to Human NP_000490.1 and 59.4kDa according to Rat NP_036672.). Primary incubation was 1 hour. Recommended concentration: 0.1-0.3µg/ml.
<b>Application Type</b>	Pep-ELISA, WB, IF, IHC

## DOCUMENTS

- [Data Sheet](#)

## GALLERY IMAGES

