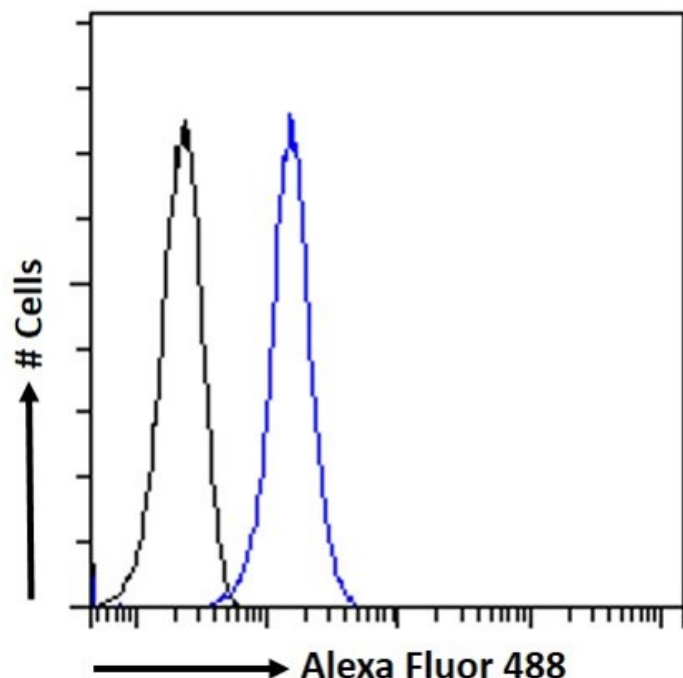


GOAT ANTI-DC-SIGN / CD209 ANTIBODY

SKU: EB12715



SPECIFICATIONS

Formulation Supplied at 0.5 mg/ml in Tris saline, 0.02% sodium azide, pH7.3 with 0.5% bovine serum albumin.

Unit Size 100 µg

Storage Instructions Aliquot and store at -20°C. Minimize freezing and thawing.

Synonym / Alias Names dendritic cell-specific intracellular adhesion molecules (ICAM)-3 grabbing non-integrin|dendritic cell-specific ICAM-3-grabbing non-integrin 1|HIV gp120-binding protein|CD209 antigen|C-type lectin domain family 4, member L|C-type lectin domain family 4 member L|DC-SIGN1|DC-SIGN|CLEC4L|CDSIGN|CD209 molecule|CD209

Usage Summary **Immunofluorescence:** Strong expression of the protein seen in the plasma membranes and cytoplasm of THP-1 cells. Recommended concentration: 10µg/ml. **Flow Cytometry:** Flow cytometric analysis of THP-1 cells. Recommended concentration: 10ug/ml.

Accession ID NP_066978.1; NP_001138368.1; NP_001138369.1; NP_001138365.1; NP_001138366.1; NP_001138367.1; NP_001138371.1

Blocking Peptide EBP12715

Immunogen	Peptide with sequence C-NRGEPNNVGEED, from the internal region of the protein sequence according to NP_066978.1; NP_001138368.1; NP_001138369.1; NP_001138365.1; NP_001138366.1; NP_001138367.1; NP_001138371.1.
Product Comments	This antibody is expected to recognize all reported isoforms.
Peptide Sequence	C-NRGEPNNVGEED
Purification Method	Purified from goat serum by ammonium sulphate precipitation followed by antigen affinity chromatography using the immunizing peptide.
Shipping Instructions	Refrigerated
Predicted Species	Human
Reactive Species	Human
Human Gene ID	30835
Product Grade	https://prod-vector-labs-pimcore-assets.s3.us-east-1.amazonaws.com/assets/products/image/elite_plus_medium.png
IHC Results	Paraffin embedded Human Placenta. Recommended concentration: 6µg/ml.
ELISA Detection Limit	Antibody detection limit dilution 1:128000.
Western Blot	Approx. 50kDa band observed in lysates of cell lines K562 and THP-1, and in preliminary testing of Human Lung and Testes lysate (calculated MW of 45.8kDa according to NP_066978.1). This molecular weight is observed by other commercial sources, and was successfully blocked by incubation with the immunizing peptide. Recommended concentration: 1-3µg/ml. Primary incubation 1 hour at room temperature. Positive Control: A batch specific positive control lysate is available for this product. Please contact Sales@everestbiotech.com for availability.
Application Type	Pep-ELISA, WB, IHC, IF, FC

DOCUMENTS

- [Data Sheet](#)

GALLERY IMAGES

