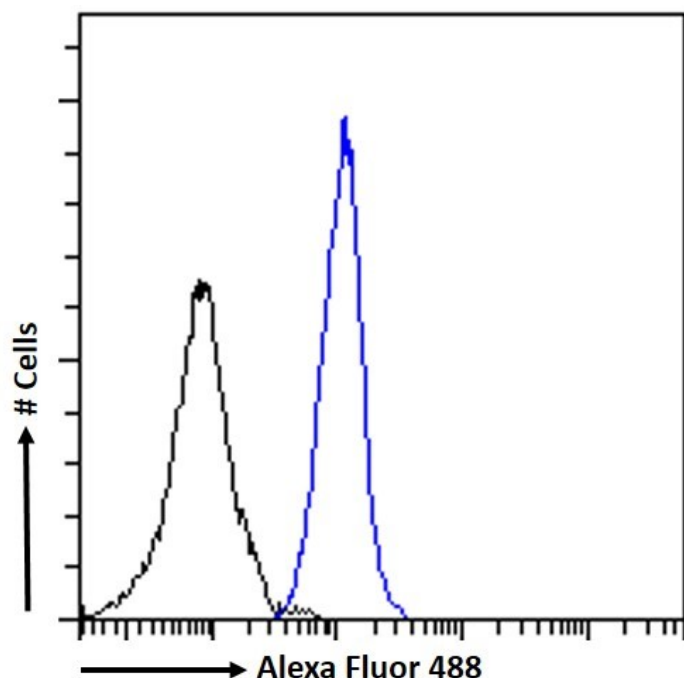


GOAT ANTI-DCTN3 ANTIBODY

SKU: EB10446



SPECIFICATIONS

Formulation	Supplied at 0.5 mg/ml in Tris saline, 0.02% sodium azide, pH7.3 with 0.5% bovine serum albumin.
Unit Size	100 µg
Storage Instructions	Aliquot and store at -20°C. Minimize freezing and thawing.
Synonym / Alias Names	DCTN3 MGC111190 dynactin light chain dynactin 3, isoform 1 dynactin 3 (p22) dynactin 3 DCTN-22 DCTN22
Usage Summary	<p><p>Flow Cytometry: Flow cytometric analysis of K562 cells. Recommended concentration: 10ug/ml.</p></p>
Accession ID	NP_009165.1; NP_077324.1
Blocking Peptide	EBP10446
Immunogen	Peptide with sequence C-QVALGNISSKRE, from the internal region of the protein sequence according to NP_009165.1; NP_077324.1.

Product Comments	This antibody is expected to recognize both reported isoforms (NP_009165.1; NP_077324.1).
Peptide Sequence	C-QVALGNISSKRE
Purification Method	Purified from goat serum by ammonium sulphate precipitation followed by antigen affinity chromatography using the immunizing peptide.
Shipping Instructions	Refrigerated
Predicted Species	Human, Mouse, Rat, Dog, Cow
Reactive Species	Human, Rat
Human Gene ID	11258
Mouse Gene ID	53598
Rat Gene ID	362504
Product Grade	https://prod-vector-labs-pimcore-assets.s3.us-east-1.amazonaws.com/assets/products/image/elite_plus_medium.png
IHC Results	Paraffin embedded Human Kidney. Recommended concentration: 6-8µg/ml.
ELISA	
Detection Limit	Antibody detection limit dilution 1:16000.
Western Blot	Approx 20kDa band observed in Human Liver lysates, and approx. 18kDa in Rat Kidney lysates and in preliminary testing of Mouse Kidney lysate (calculated MW of 19.5kDa according to Human NP_077324.1 and 21.1kDa according to Rat NP_001102129.1. Recommended concentration: 0.1-0.3µg/ml. Primary incubation 1 hour at room temperature.
Application Type	Pep-ELISA, WB, IHC, FC

DOCUMENTS

- [Data Sheet](#)

GALLERY IMAGES

