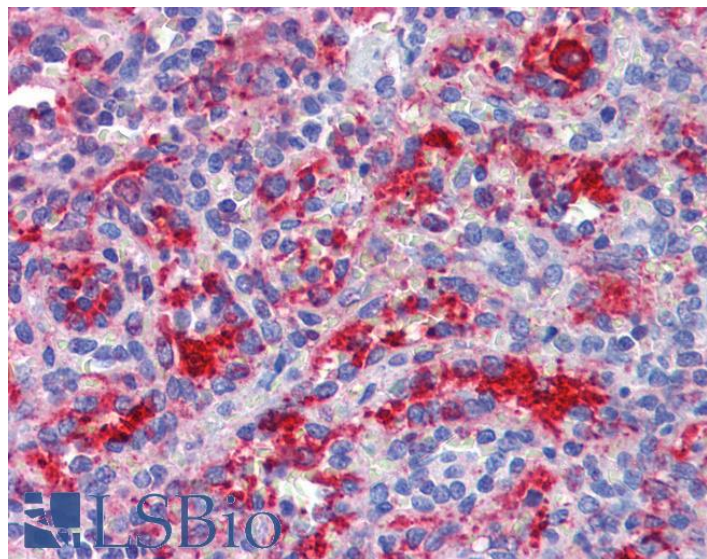


# GOAT ANTI-DDX58 ANTIBODY

**SKU:** EB08003



## SPECIFICATIONS

<b>Formulation</b>	Supplied at 0.5 mg/ml in Tris saline, 0.02% sodium azide, pH7.3 with 0.5% bovine serum albumin.
<b>Unit Size</b>	100 µg
<b>Storage Instructions</b>	Aliquot and store at -20°C. Minimize freezing and thawing.
<b>Synonym / Alias Names</b>	retinoic acid-inducible gene 1 RNA helicase RIG-1 RNA helicase OTTHUMP00000045225 DEAD/H (Asp-Glu-Ala-Asp/His) box polypeptide RIG-1 DEAD/H (Asp-Glu-Ala-Asp/His) box polypeptide RIG-1 FLJ13599 DKFZp686N19181 DKFZp434J1111 DEAD (Asp-Glu-Ala-Asp) box polypeptide 58 DDX58
<b>Usage Summary</b>	<strong>Immunofluorescence:</strong> Strong expression of the protein seen in the cytoplasm of A431 and HeLa cells. Recommended concentration: 10µg/ml. <strong>Flow Cytometry:</strong> Flow cytometric analysis of U937 cells. Recommended concentration: 10ug/ml.
<b>Accession ID</b>	NP_055129.2
<b>Blocking Peptide</b>	EBP08003
<b>Immunogen</b>	Peptide with sequence C-KDFHFEKIPFDPAE, from the C Terminus of the protein sequence according to NP_055129.2.
<b>Peptide Sequence</b>	C-KDFHFEKIPFDPAE
<b>Purification Method</b>	Purified from goat serum by ammonium sulphate precipitation followed by antigen affinity chromatography using the immunizing peptide.

<b>Shipping Instructions</b>	Refrigerated
<b>Predicted Species</b>	Human, Mouse
<b>Reactive Species</b>	Human
<b>Human Gene ID</b>	23586
<b>Product Grade</b>	<a href="https://prod-vector-labs-pimcore-assets.s3.us-east-1.amazonaws.com/assets/products/image/elite_plus_medium.png">https://prod-vector-labs-pimcore-assets.s3.us-east-1.amazonaws.com/assets/products/image/elite_plus_medium.png</a>
<b>IHC Results</b>	Paraffin embedded Human Spleen, Placenta, and Brain (Cortex). Recommended concentration: 3.75µg/ml.
<b>ELISA</b>	
<b>Detection Limit</b>	Antibody detection limit dilution 1:32000.
<b>Application Type</b>	Pep-ELISA, FC, IF, IHC

## DOCUMENTS

- [Data Sheet](#)

## GALLERY IMAGES

