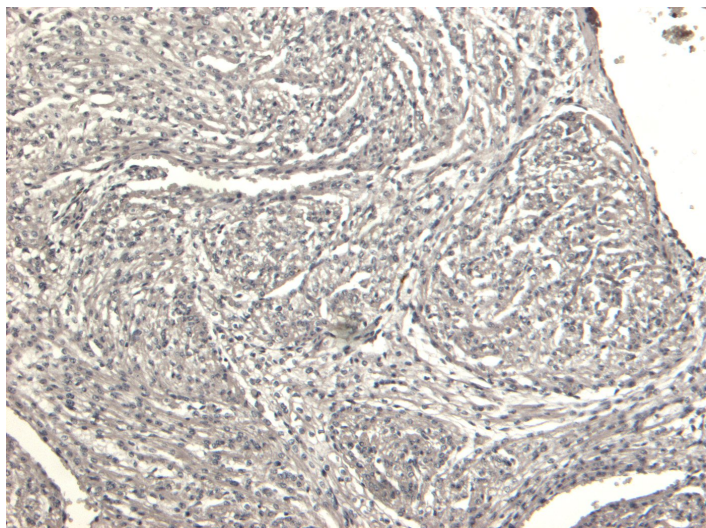


# GOAT ANTI-DESMIN ANTIBODY

**SKU:** EB09106



## SPECIFICATIONS

**Formulation** Supplied at 0.5 mg/ml in Tris saline, 0.02% sodium azide, pH7.3 with 0.5% bovine serum albumin.

**Unit Size** 100 µg

**Storage Instructions** Aliquot and store at -20°C. Minimize freezing and thawing.

**Synonym /**

**Alias Names** intermediate filament protein|FLJ41793|FLJ41013|FLJ39719|FLJ12025|CSM2|CSM1|CMD1|desmin|DES

**Accession ID** NP\_001918.3

**Blocking Peptide** EBP09106

**Immunogen** Peptide with sequence C-RDGEVVSEATQQQHE, from the C Terminus of the protein sequence according to NP\_001918.3.

**Peptide Sequence** C-RDGEVVSEATQQQHE

**Purification Method** Purified from goat serum by ammonium sulphate precipitation followed by antigen affinity chromatography using the immunizing peptide.

**Shipping Instructions** Refrigerated

<b>Predicted Species</b>	Human, Mouse, Dog, Cow
<b>Reactive Species</b>	Human, Mouse
<b>Human Gene ID</b>	1674
<b>Mouse Gene ID</b>	13346
<b>Rat Gene ID</b>	64362
<b>Product Grade</b>	<a href="https://prod-vector-labs-pimcore-assets.s3.us-east-1.amazonaws.com/assets/products/image/elite_medium.png">https://prod-vector-labs-pimcore-assets.s3.us-east-1.amazonaws.com/assets/products/image/elite_medium.png</a>
<b>IHC Results</b>	Paraffin embedded Human Heart. Recommended concentration: 4-6µg/ml.
<b>ELISA</b>	
<b>Detection Limit</b>	Antibody detection limit dilution 1:128000.
<b>Western Blot</b>	Approx. 55-60kDa band observed in Human and Mouse Skeletal Muscle lysates and in Human Heart lysates (calculated MW of 53.5kDa according to Human NP_001918.3, and Mouse NP_034173.1). Preliminary testing showed a band at approx 60kDa in Rat and Pig Skeletal muscle lysate. Recommended concentration: 0.01-0.3µg/ml. Primary incubation 1 hour at room temperature.
<b>Application Type</b>	Pep-ELISA, WB, IHC

## DOCUMENTS

- [Data Sheet](#)

## GALLERY IMAGES

