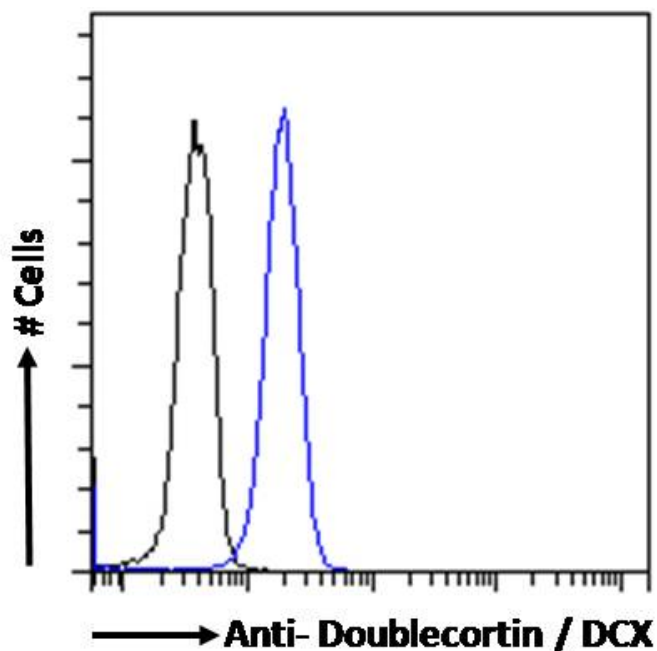


# GOAT ANTI-DOUBLECORTIN / DCX (AA69-81) ANTIBODY

SKU: EB10782



## SPECIFICATIONS

**Formulation** Supplied at 0.5 mg/ml in Tris saline, 0.02% sodium azide, pH7.3 with 0.5% bovine serum albumin.

**Unit Size** 100 µg

**Storage Instructions** Aliquot and store at -20°C. Minimize freezing and thawing.

**Synonym / Alias Names** neuronal migration protein doublecortin| lissencephalin-X| lis-X| doublin| doublecortex| OTTHUMP00000216316| XLIS| SCLH| LISX| FLJ51296| DC| DBCN| RP5-914P14.1| doublecortin|DCX

**Usage Summary** **Immunofluorescence:** Strong expression of the protein seen in the cytoplasm of HepG2 cells. Recommended concentration: 10µg/ml. **Flow Cytometry:** Flow cytometric analysis of Kelly cells. Recommended concentration: 10ug/ml.

**Accession ID** NP\_000546.2

**Blocking Peptide** EBP10782

**Immunogen** Peptide with sequence DRSHCQSLRFHQN, from the internal region of the protein sequence according to NP\_000546.2.

<b>Product Comments</b>	This antibody is expected to recognize reported isoform a (NP_000546.2) only.
<b>Peptide Sequence</b>	DRSHCQSLRFHQN
<b>Purification Method</b>	Purified from goat serum by ammonium sulphate precipitation followed by antigen affinity chromatography using the immunizing peptide.
<b>Shipping Instructions</b>	Refrigerated
<b>Predicted Species</b>	Human, Cow
<b>Reactive Species</b>	Human
<b>Human Gene ID</b>	1641
<b>Product Grade</b>	<a href="https://prod-vector-labs-pimcore-assets.s3.us-east-1.amazonaws.com/assets/products/image/elite_plus_medium.png">https://prod-vector-labs-pimcore-assets.s3.us-east-1.amazonaws.com/assets/products/image/elite_plus_medium.png</a>
<b>IHC Results</b>	Paraffin embedded Human Brain (Cortex). Recommended concentration: 6µg/ml.
<b>ELISA</b>	
<b>Detection Limit</b>	Antibody detection limit dilution 1:16000.
<b>Application Type</b>	Pep-ELISA, IF, IHC, FC

## DOCUMENTS

- [Data Sheet](#)

## GALLERY IMAGES

