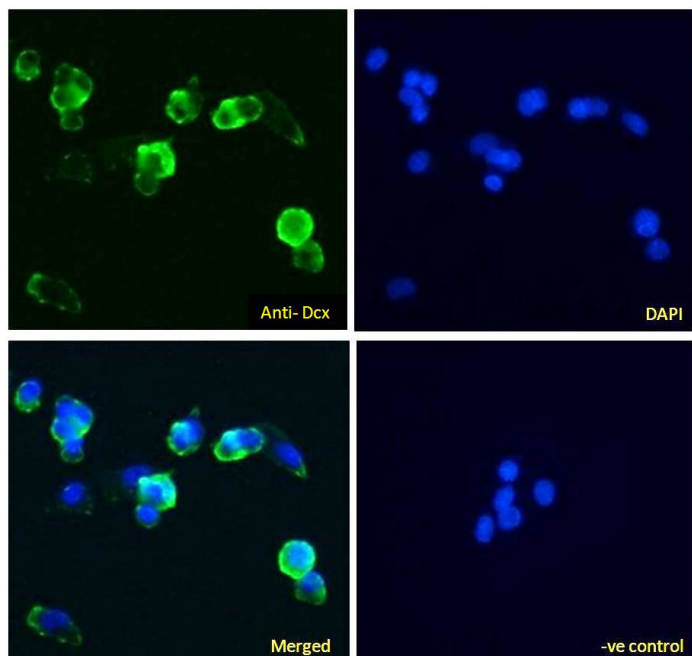


# GOAT ANTI-DOUBLECORTIN (MOUSE) ANTIBODY

SKU: EB11639



## SPECIFICATIONS

**Formulation** Supplied at 0.5 mg/ml in Tris saline, 0.02% sodium azide, pH7.3 with 0.5% bovine serum albumin.

**Unit Size** 100 µg

**Storage Instructions** Aliquot and store at -20°C. Minimize freezing and thawing.

**Synonym / Alias** OTTMUSP00000020397|OTTMUSP00000020396|OTTMUSP00000020395|OTTMUSP00000020394|neuronal migration protein doublecortin|lis-X|lissencephaly, X-linked (doublecortin)|lissencephalin-

**Names** X|doublin|doublecortin|doublecortex|Dcx|Dbct

**Usage Summary** <strong>Immunofluorescence:</strong> Strong expression of the protein seen in the cytoplasm of HepG2 cells. Recommended concentration: 5µg/ml

**Accession ID** NP\_001103692.1; NP\_001103694.1; NP\_034155.2

**Blocking Peptide** EBP11639

**Immunogen** Peptide with sequence C-PKASPTPQKTS AKS, from the internal region of the protein sequence according to NP\_001103692.1; NP\_001103694.1; NP\_034155.2.

<b>Product</b>	This antibody is expected to recognize all reported mouse isoforms (NP_001103692.1; NP_001103694.1;
<b>Comments</b>	NP_034155.2). Reported variants represent identical protein: NP_001103692.1, NP_001103693.1
<b>Peptide Sequence</b>	C-PKASPTPQKTSAKS
<b>Purification Method</b>	Purified from goat serum by ammonium sulphate precipitation followed by antigen affinity chromatography using the immunizing peptide.
<b>Shipping Instructions</b>	Refrigerated
<b>Predicted Species</b>	Human, Mouse, Rat
<b>Reactive Species</b>	Human, Mouse
<b>Human Gene ID</b>	1641
<b>Mouse Gene ID</b>	13193
<b>Rat Gene ID</b>	84394
<b>Product Grade</b>	<a href="https://prod-vector-labs-pimcore-assets.s3.us-east-1.amazonaws.com/assets/products/image/elite_medium.png">https://prod-vector-labs-pimcore-assets.s3.us-east-1.amazonaws.com/assets/products/image/elite_medium.png</a>
<b>ELISA Detection Limit</b>	Antibody detection limit dilution 1:128000.
<b>Western Blot</b>	Approx 40kDa band observed in Mouse fetal Brain lysates (calculated MW of 40.6kDa according to NP_001103692.1). Recommended concentration: 0.5-2µg/ml. Primary incubation was 1 hour.
<b>Application Type</b>	Pep-ELISA, WB, IF

## DOCUMENTS

- [Data Sheet](#)

## GALLERY IMAGES

