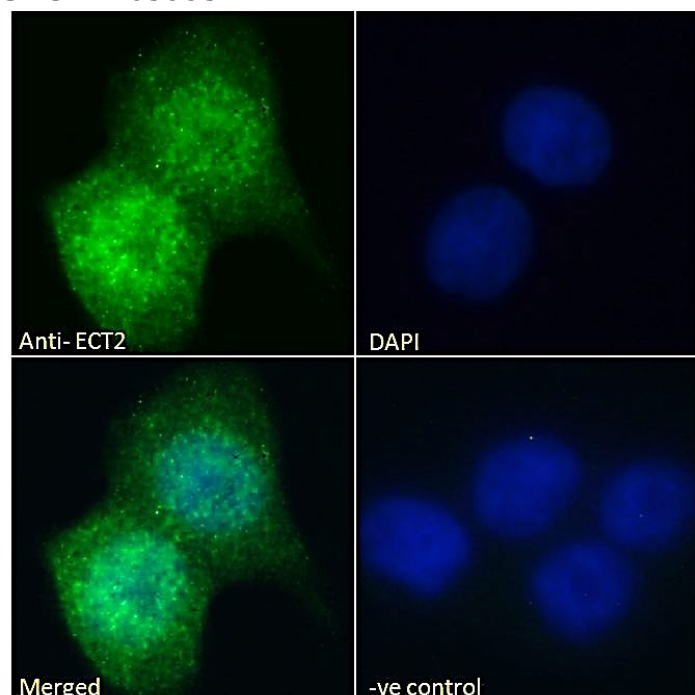


# GOAT ANTI-ECT2 ANTIBODY

SKU: EB05995



## SPECIFICATIONS

**Formulation** Supplied at 0.5 mg/ml in Tris saline, 0.02% sodium azide, pH7.3 with 0.5% bovine serum albumin.

**Unit Size** 100 µg

**Storage Instructions** Aliquot and store at -20°C. Minimize freezing and thawing.

**Synonym / Alias Names** epithelial cell transforming sequence 2 oncogene protein|FLJ10461|epithelial cell transforming sequence 2 oncogene|ECT2

**Usage Summary** **Immunofluorescence:** Strong expression of the protein seen in the nuclei and cytoplasm of A431 and U2OS cells. Recommended concentration: 10µg/ml. **Flow Cytometry:** Flow cytometric analysis of A431 cells. Recommended concentration: 10ug/ml.

**Accession ID** NP\_060568.3; NP\_001245244.1; NP\_001336023.1; NP\_001336026.1; NP\_001336030.1; NP\_001336031.1; NP\_001336032.1

**Blocking Peptide** EBP05995

Peptide with sequence AENSVLTSTTGRT-C, from the N Terminus of the protein sequence according to

<b>Immunogen</b>	NP_060568.3; NP_001245244.1; NP_001336023.1; NP_001336026.1; NP_001336030.1; NP_001336031.1; NP_001336032.1.
<b>Product</b>	This antibody is expected to recognise NP_001245244.1 (iso a), NP_060568.3 (iso b), NP_001336023.1 (iso c),
<b>Comments</b>	NP_001336026.1 (iso d), NP_001336030.1 (iso e), NP_001336031.1 (iso f); NP_001336032.1 (iso g)
<b>Peptide Sequence</b>	AENSVLTSTTGRT-C
<b>Purification Method</b>	Purified from goat serum by ammonium sulphate precipitation followed by antigen affinity chromatography using the immunizing peptide.
<b>Shipping Instructions</b>	Refrigerated
<b>Predicted Species</b>	Human
<b>Reactive Species</b>	Human
<b>Human Gene ID</b>	1894
<b>Product Grade</b>	<a href="https://prod-vector-labs-pimcore-assets.s3.us-east-1.amazonaws.com/assets/products/image/elite_medium.png">https://prod-vector-labs-pimcore-assets.s3.us-east-1.amazonaws.com/assets/products/image/elite_medium.png</a>
<b>ELISA Detection Limit</b>	Antibody detection limit dilution 1:128000.
<b>Application Type</b>	Pep-ELISA, IF, FC

## DOCUMENTS

- [Data Sheet](#)

## GALLERY IMAGES

