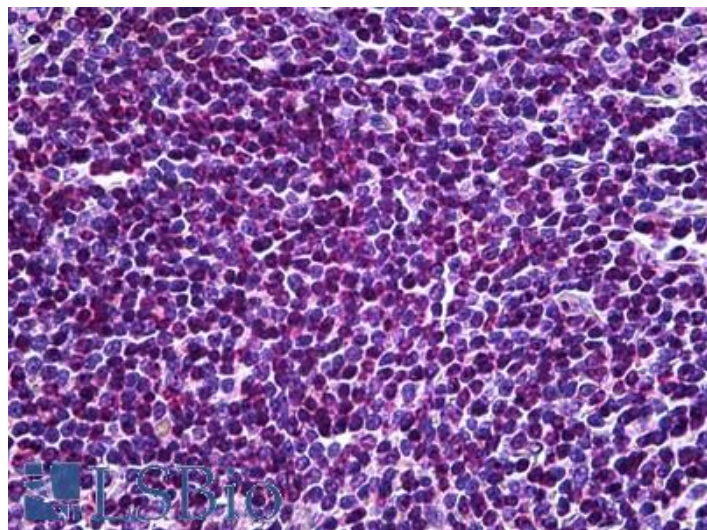


# GOAT ANTI-EDD1 / HYD ANTIBODY

**SKU:** EB05920



## SPECIFICATIONS

<b>Formulation</b>	Supplied at 0.5 mg/ml in Tris saline, 0.02% sodium azide, pH7.3 with 0.5% bovine serum albumin.
<b>Unit Size</b>	100 µg
<b>Storage Instructions</b>	Aliquot and store at -20°C. Minimize freezing and thawing.
<b>Synonym / Alias Names</b>	UBR5 EDD1 E3 ubiquitin protein ligase, HECT domain containing, 1 DD5 EDD HYD KIAA0896 progesterone induced protein ubiquitin-protein ligase E3 identified by differential display hyperplastic discs protein homolog ubiquitin protein ligase E3 component n-recogin 5 FLJ11310 MGC57263
<b>Accession ID</b>	NP_056986.2
<b>Blocking Peptide</b>	EBP05920
<b>Immunogen</b>	Peptide with sequence C-LAIKTKNFGFV, from the C Terminus of the protein sequence according to NP_056986.2.
<b>Peptide Sequence</b>	C-LAIKTKNFGFV
<b>Purification Method</b>	Purified from goat serum by ammonium sulphate precipitation followed by antigen affinity chromatography using the immunizing peptide.
<b>Shipping Instructions</b>	Refrigerated

<b>Predicted Species</b>	Human, Mouse, Rat, Pig, Cow
<b>Reactive Species</b>	Human
<b>Human Gene ID</b>	51366
<b>Mouse Gene ID</b>	70790
<b>Rat Gene ID</b>	117060
<b>Product Grade</b>	<a href="https://prod-vector-labs-pimcore-assets.s3.us-east-1.amazonaws.com/assets/products/image/elite_medium.png">https://prod-vector-labs-pimcore-assets.s3.us-east-1.amazonaws.com/assets/products/image/elite_medium.png</a>
<b>IHC Results</b>	In paraffin embedded Human Testis shows nuclear staining in all germ cells. Recommended concentration: 1-2µg/ml. Paraffin embedded Human Spleen. Recommended concentration: 1-2µg/ml.
<b>ELISA</b>	
<b>Detection Limit</b>	Antibody detection limit dilution 1:4000.
<b>Application Type</b>	Pep-ELISA, IHC

## DOCUMENTS

- [Data Sheet](#)

## GALLERY IMAGES

