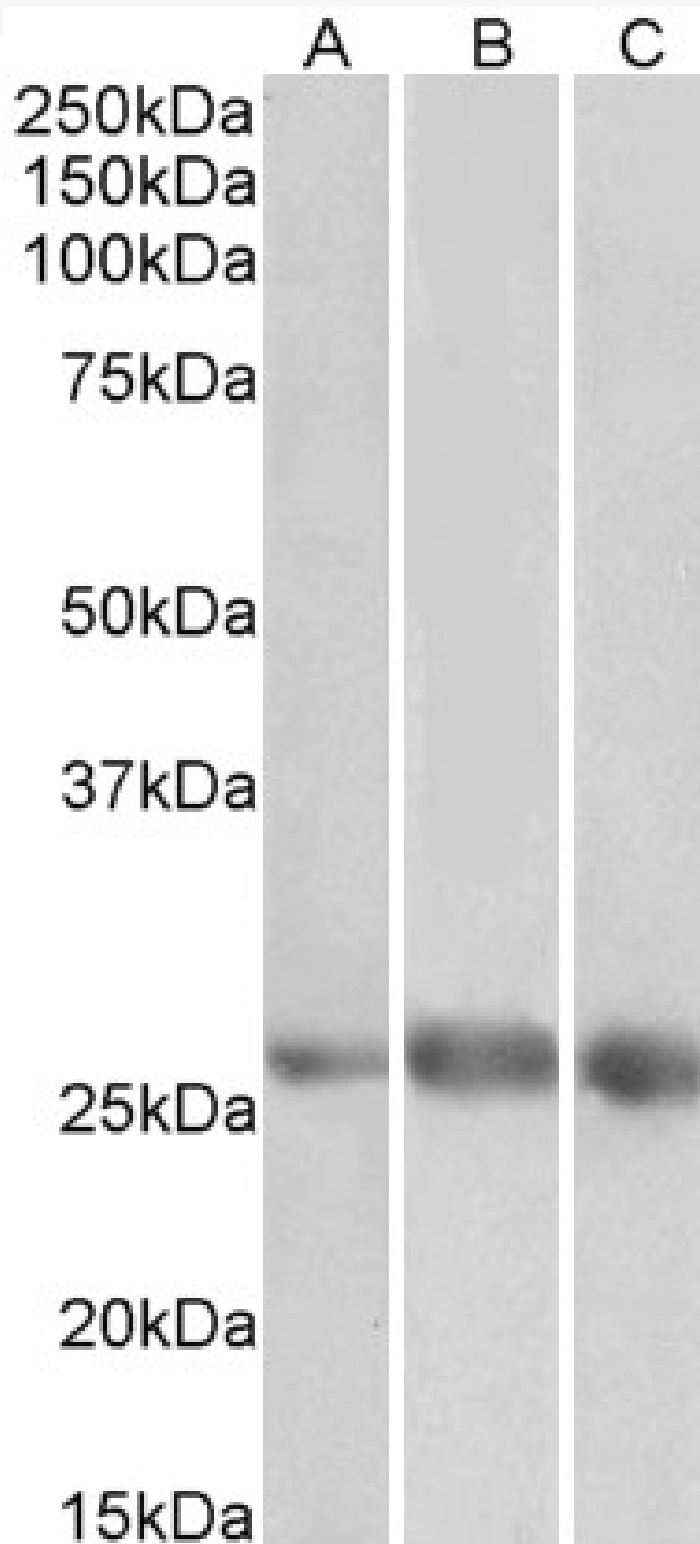


GOAT ANTI-EGFL7 ANTIBODY

SKU: EB12753



SPECIFICATIONS

Formulation	Supplied at 0.5 mg/ml in Tris saline, 0.02% sodium azide, pH7.3 with 0.5% bovine serum albumin.
Unit Size	100 µg
Storage Instructions	Aliquot and store at -20°C. Minimize freezing and thawing.
Synonym / Alias Names	multiple epidermal growth factor-like domains protein 7 multiple EGF-like domains protein 7 epidermal growth factor-like protein 7 NOTCH4-like protein EGF-like protein 7 ZNEU1 VE-STATIN RP11-251M1.2 NEU1 EGF-like-domain, multiple 7 EGFL7
Accession ID	NP_057299.1
Blocking Peptide	EBP12753
Immunogen	Peptide with sequence C-HGDPVSESFVQR, from the internal region of the protein sequence according to NP_057299.1.
Product Comments	The immunizing peptide represents the N terminus of the mature protein. Reported variants represent identical protein: NP_057299.1, NP_958854.1.
Peptide Sequence	C-HGDPVSESFVQR
Purification Method	Purified from goat serum by ammonium sulphate precipitation followed by antigen affinity chromatography using the immunizing peptide.
Shipping Instructions	Refrigerated
Predicted Species	Human
Reactive Species	Human
Human Gene ID	51162
Product Grade	https://prod-vector-labs-pimcore-assets.s3.us-east-1.amazonaws.com/assets/products/image/elite_medium.png
ELISA Detection Limit	Antibody detection limit dilution 1:128000.
Western Blot	Approx 26-27kDa band observed in Human Heart, Kidney and Lung lysates (calculated MW of 29.6kDa according to NP_057299.1). The observed molecular weight corresponds to the mature form (calc. MW 27.1kDa without its 23aa signal peptide). Recommended concentration: 1-3µg/ml. Primary incubation 1 hour at room temperature.
Application Type	Pep-ELISA, WB

DOCUMENTS

- [Data Sheet](#)

GALLERY IMAGES

