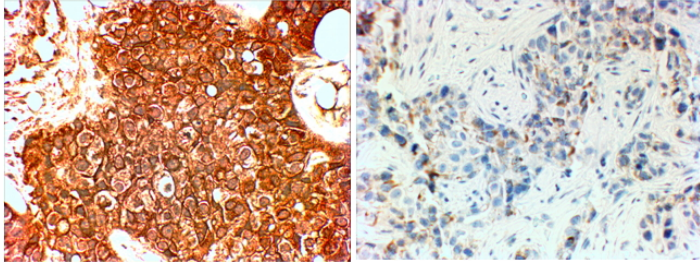


GOAT ANTI-ERBB2 / HER2 (AA182-194) ANTIBODY

SKU: EB11749



SPECIFICATIONS

Formulation Supplied at 0.5 mg/ml in Tris saline, 0.02% sodium azide, pH7.3 with 0.5% bovine serum albumin.

Unit Size 100 µg

Storage Instructions Aliquot and store at -20°C. Minimize freezing and thawing.

Synonym / Alias Names

v-erb-b2 erythroblastic leukemia viral oncogene homolog 2, neuro/glioblastoma derived oncogene homolog (avian)|v-erb-b2 avian erythroblastic leukemia viral oncogene homolog 2 (neuro/glioblastoma derived oncogene homolog)|tyrosine kinase-type cell surface receptor HER2|TKR1|receptor tyrosine-protein kinase erbB-2|proto-oncogene Neu|proto-oncogene c-ErbB-2|p185erbB2|NGL|neuroblastoma/glioblastoma derived oncogene homolog|NEU|MLN 19|metastatic lymph node gene 19 protein|herstatin|HER-2/neu|HER-2|HER2|ERBB2|c-erb B2/neu protein|CD340

Accession ID NP_004439.2; NP_001005862.1

Blocking Peptide EBP11749

Immunogen Peptide with sequence TLIDTNRSRACHP, from the internal region of the protein sequence according to NP_004439.2; NP_001005862.1.

Product Comments This antibody is expected to recognize both reported isoforms (NP_004439.2; NP_001005862.1). The immunizing peptide represents part of the extracellular domain.

Peptide Sequence TLIDTNRSRACHP

Purification Method Purified from goat serum by ammonium sulphate precipitation followed by antigen affinity chromatography using the immunizing peptide.

Shipping Instructions Refrigerated

Predicted Species Human

Reactive Species Human

| | |
|-------------------------|-----------------------------------------------------------------------------------------------------------------------------------------------------------------------------------------------------------------------------------|
| Human Gene ID | 2064 |
| Product Grade | https://prod-vector-labs-pimcore-assets.s3.us-east-1.amazonaws.com/assets/products/image/elite_medium.png |
| IHC Results | In paraffin embedded Human breast cancer shows cell membrane and cytoplasm staining in the affected cells of Her+ type and not in triple negative type. Recommended concentration, 4-6µg/ml. |
| ELISA | |
| Detection Limit | Antibody detection limit dilution 1:128000. |
| Application Type | Pep-ELISA, IHC |

DOCUMENTS

- [Data Sheet](#)

GALLERY IMAGES

