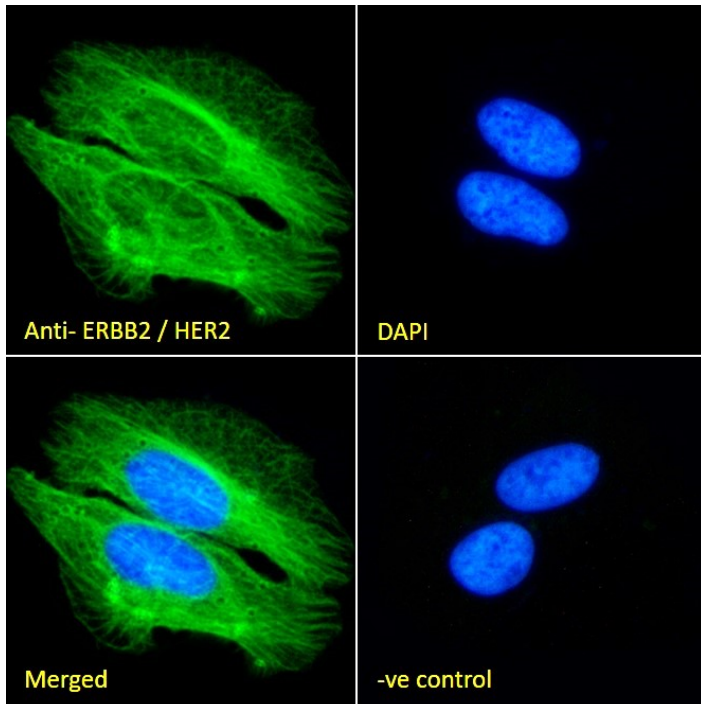




GOAT ANTI-ERBB2 / HER2 ANTIBODY

SKU: EB11748



SPECIFICATIONS

Formulation Supplied at 0.5 mg/ml in Tris saline, 0.02% sodium azide, pH7.3 with 0.5% bovine serum albumin.

Unit Size 100 µg

Storage Instructions Aliquot and store at -20°C. Minimize freezing and thawing.

Synonym / Alias Names v-erb-b2 erythroblastic leukemia viral oncogene homolog 2, neuro/glioblastoma derived oncogene homolog (avian)|v-erb-b2 avian erythroblastic leukemia viral oncogene homolog 2 (neuro/glioblastoma derived oncogene homolog)|tyrosine kinase-type cell surface receptor HER2|TKR1|receptor tyrosine-protein kinase erbB-2|proto-oncogene Neu|proto-oncogene c-ErbB-2|p185erbB2|NGL|neuroblastoma/glioblastoma derived oncogene homolog|NEU|MLN 19|metastatic lymph node gene 19 protein|herstatin|HER-2/neu|HER-2|HER2|ERBB2|c-erb B2/neu protein|CD340

Usage Summary **Immunofluorescence:** Strong expression of the protein seen in U2OS cells. Recommended concentration: 10µg/ml. **Flow Cytometry:** Flow cytometric analysis of U2OS cells. Recommended concentration: 10ug/ml.

Accession ID NP_004439.2; NP_001005862.1; NP_001276867.1; NP_001276866.1; NP_001369713.1; NP_001369733.1



Blocking Peptide	EBP11748
Immunogen	Peptide with sequence PREYVNARHCLP, from the internal region of the protein sequence according to NP_004439.2; NP_001005862.1; NP_001276867.1; NP_001276866.1; NP_001369713.1; NP_001369733.1.
Product Comments	This antibody is expected to recognise multiple isoforms. The immunizing peptide represents part of the extracellular domain.
Peptide Sequence	PREYVNARHCLP
Purification Method	Purified from goat serum by ammonium sulphate precipitation followed by antigen affinity chromatography using the immunizing peptide.
Shipping Instructions	Refrigerated
Predicted Species	Human
Reactive Species	Human
Human Gene ID	2064
Product Grade	https://prod-vector-labs-pimcore-assets.s3.us-east-1.amazonaws.com/assets/products/image/elite_plus_medium.png
IHC Results	In paraffin embedded Human breast cancer shows cell membrane and cytoplasm staining in the affected cells of Her+ type and not in triple negative type. Recommended concentration: 4-6µg/ml.
ELISA Detection Limit	Antibody detection limit dilution 1:128000.
Application Type	Pep-ELISA, IHC, IF, FC

DOCUMENTS

- [Data Sheet](#)

GALLERY IMAGES



www.everestbiotech.com

Email: customerservice@vectorlabs.com

Telephone: (650) 697-3600

