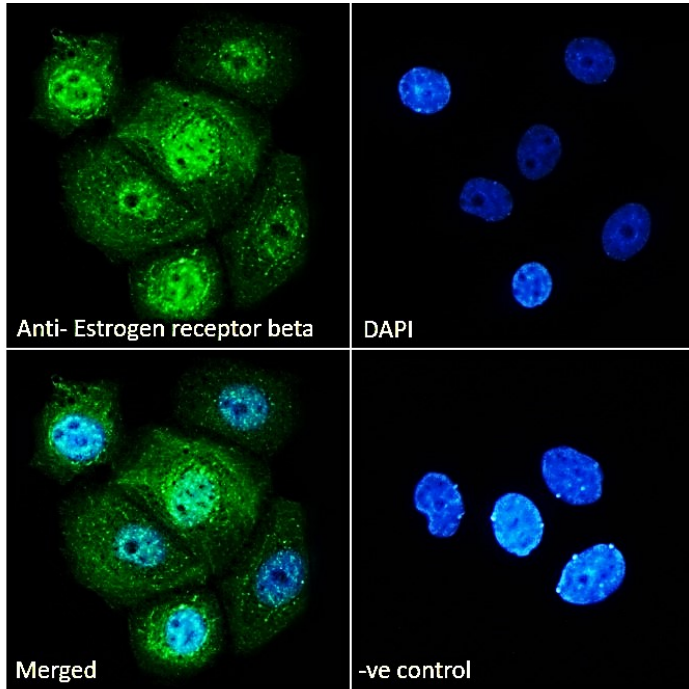




GOAT ANTI-ESTROGEN RECEPTOR BETA (AA417-428) ANTIBODY

SKU: EB11581



SPECIFICATIONS

Formulation Supplied at 0.5 mg/ml in Tris saline, 0.02% sodium azide, pH7.3 with 0.5% bovine serum albumin.

Unit Size 100 µg

Storage Instructions Aliquot and store at -20°C. Minimize freezing and thawing.

Synonym / OTTHUMP00000180647|nuclear receptor subfamily 3 group A member 2|NR3A2|estrogen receptor beta

Alias 4|estrogen receptor beta|estrogen receptor 2 (ER beta)|estrogen nuclear receptor beta variant b|estrogen

Names nuclear receptor beta variant a|ESTRB|ESR-BETA|ESRB|ESR2|ER-BETA|Erb

Usage Immunofluorescence: Strong expression of the protein seen in the nucleus of HeLa and

Summary MCF7 cells. Recommended concentration: 10µg/ml.

Accession ID NP_001428.1; NP_001035365.1; NP_001201831.1; NP_001201832.1

Blocking Peptide EBP11581



Immunogen	Peptide with sequence C-TQDADSSRKLAH, from the internal region of the protein sequence according to NP_001428.1; NP_001035365.1; NP_001201831.1; NP_001201832.1.
Product Comments	This antibody is expected to recognize all reported isoforms (NP_001428.1; NP_001035365.1; NP_001201831.1; NP_001201832.1). Reported variants represent identical protein: NP_001035365.1, NP_001035366.1
Peptide Sequence	C-TQDADSSRKLAH
Purification Method	Purified from goat serum by ammonium sulphate precipitation followed by antigen affinity chromatography using the immunizing peptide.
Shipping Instructions	Refrigerated
Predicted Species	Human
Reactive Species	Human
Human Gene ID	2100
Product Grade	https://prod-vector-labs-pimcore-assets.s3.us-east-1.amazonaws.com/assets/products/image/elite_medium.png
ELISA Detection Limit	Antibody detection limit dilution 1:128000.
Western Blot	Approx 50kDa band observed in Human Placenta lysates (calculated MW of 53.0kDa according to NP_001035366.1). Recommended concentration: 1-3µg/ml. Primary incubation was 1 hour.
Application Type	Pep-ELISA, WB, IF

DOCUMENTS

- [Data Sheet](#)

GALLERY IMAGES

