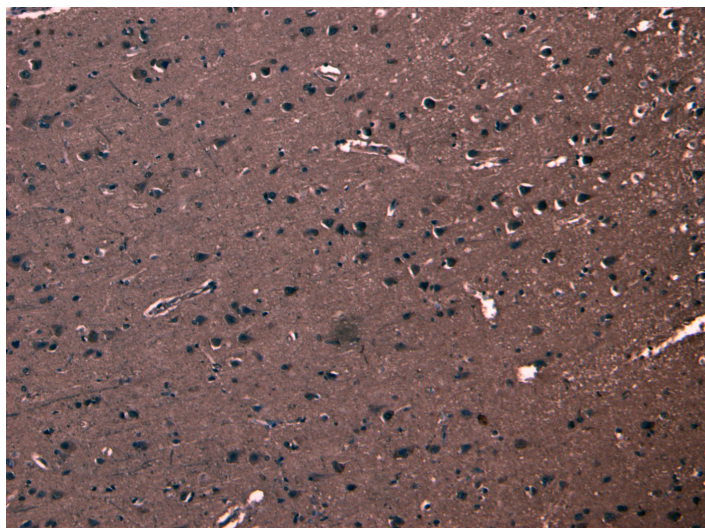


GOAT ANTI-FBL2 / FBXL2 ANTIBODY

SKU: EB06041



SPECIFICATIONS

Formulation	Supplied at 0.5 mg/ml in Tris saline, 0.02% sodium azide, pH7.3 with 0.5% bovine serum albumin.
Unit Size	100 µg
Storage	Aliquot and store at -20°C. Minimize freezing and thawing.
Instructions	
Synonym / Alias Names	F-box protein containing leucine-rich repeats DKFZP564P0622 FBL3 F-box and leucine-rich repeat protein 2 FBL2 FBXL2
Usage	Immunofluorescence: Strong expression of the protein seen in the cytoplasm of HeLa cells.
Summary	Recommended concentration: 10µg/ml.
Accession ID	NP_036289.2
Blocking Peptide	EBP06041
Immunogen	Peptide with sequence VFSNNDEGLINKK-C, from the N Terminus of the protein sequence according to NP_036289.2.
Peptide Sequence	VFSNNDEGLINKK-C
Purification Method	Purified from goat serum by ammonium sulphate precipitation followed by antigen affinity chromatography using the immunizing peptide.

Shipping Instructions	Refrigerated
Predicted Species	Human, Rat, Dog, Cow
Reactive Species	Human
Human Gene ID	25827
Product Grade	https://prod-vector-labs-pimcore-assets.s3.us-east-1.amazonaws.com/assets/products/image/elite_medium.png
IHC Results	Paraffin embedded Human Cortex. Recommended concentration: 8µg/ml.
ELISA	
Detection Limit	Antibody detection limit dilution 1:128000.
Western Blot	Preliminary testing showed a band at approx 48kDa in Human Kidney lysate after 0.1µg/ml antibody staining (calculated MW of 47.1kDa according to NP_036289.2). Primary incubation 1 hour at room temperature.
Application Type	Pep-ELISA, IHC, IF

DOCUMENTS

- [Data Sheet](#)

GALLERY IMAGES

