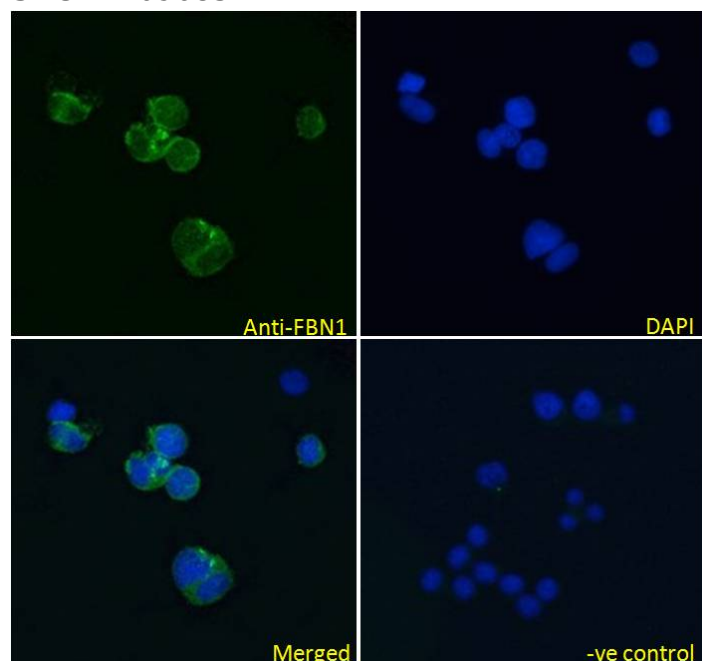


# GOAT ANTI-FBN1 ANTIBODY

SKU: EB09683



## SPECIFICATIONS

**Formulation** Supplied at 0.5 mg/ml in Tris saline, 0.02% sodium azide, pH7.3 with 0.5% bovine serum albumin.

**Unit Size** 100 µg

**Storage Instructions** Aliquot and store at -20°C. Minimize freezing and thawing.

**Synonym /**

**Alias Names** fibrillin 15|WMS|SGS|OCTD|MFS1|MASS|FBN|fibrillin 1|FBN1

**Usage Summary** **Immunofluorescence:** Strong expression of the protein seen in the nuclei of U251 cells. Recommended concentration: 10µg/ml. Strong expression of the protein seen in the cytoplasm of A431 and Jurkat cells. Recommended concentration: 10µg/ml.

**Accession ID** NP\_000129.3

**Blocking Peptide** EBP09683

**Immunogen** Peptide with sequence C-DASNIEDQSETEAN, from the Internal region of the protein sequence according to NP\_000129.3.

<b>Peptide Sequence</b>	C-DASNIEDQSETEAN
<b>Purification Method</b>	Purified from goat serum by ammonium sulphate precipitation followed by antigen affinity chromatography using the immunizing peptide.
<b>Shipping Instructions</b>	Refrigerated
<b>Predicted Species</b>	Human, Mouse, Rat, Dog, Cow
<b>Reactive Species</b>	Human
<b>Human Gene ID</b>	2200
<b>Mouse Gene ID</b>	14118
<b>Rat Gene ID</b>	83727
<b>Product Grade</b>	<a href="https://prod-vector-labs-pimcore-assets.s3.us-east-1.amazonaws.com/assets/products/image/elite_medium.png">https://prod-vector-labs-pimcore-assets.s3.us-east-1.amazonaws.com/assets/products/image/elite_medium.png</a>
<b>ELISA</b>	
<b>Detection Limit</b>	Antibody detection limit dilution 1:2000.
<b>Application Type</b>	Pep-ELISA, IF

## DOCUMENTS

- [Safety Data Sheet](#)

## GALLERY IMAGES

