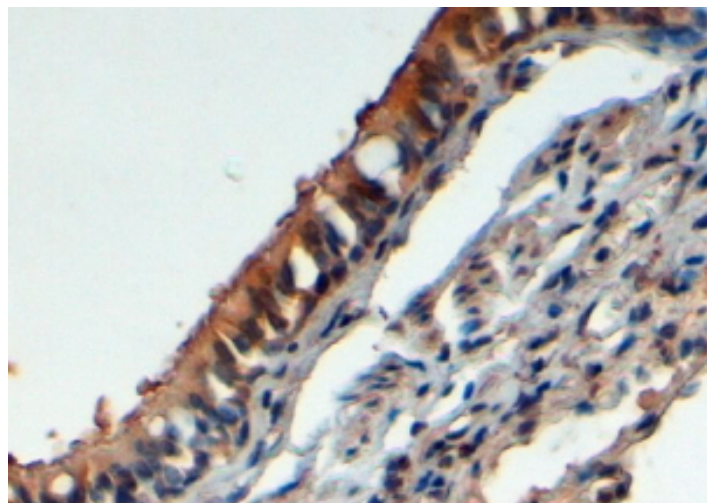


GOAT ANTI-FBXL12 ANTIBODY

SKU: EB06050



SPECIFICATIONS

Formulation Supplied at 0.5 mg/ml in Tris saline, 0.02% sodium azide, pH7.3 with 0.5% bovine serum albumin.

Unit Size 100 µg

Storage Instructions Aliquot and store at -20°C. Minimize freezing and thawing.

Synonym / Alias Names Fbl12|F-box and leucine-rich repeat protein 12|hypothetical protein FLJ20188|FLJ20188|likely ortholog of mouse f-box and leucine-rich repeat protein 12|FBXL12

Accession ID NP_060173.1

Blocking Peptide EBP06050

Immunogen Peptide with sequence RACPKEsMDWWM, from the C Terminus of the protein sequence according to NP_060173.1.

Peptide Sequence RACPKEsMDWWM

Purification Method Purified from goat serum by ammonium sulphate precipitation followed by antigen affinity chromatography using the immunizing peptide.

Shipping Instructions Refrigerated

Predicted Species Human, Mouse, Rat, Dog

Reactive Species	Human
Human Gene ID	54850
Mouse Gene ID	30843
Product Grade	https://prod-vector-labs-pimcore-assets.s3.us-east-1.amazonaws.com/assets/products/image/elite_medium.png
IHC Results	In paraffin embedded Human Lung shows staining of epithelial cells in the bronchioles and alveoli. Recommended concentration: 4-6µg/ml.
ELISA	
Detection Limit	Antibody detection limit dilution 1:128000.
Application Type	Pep-ELISA, IHC

DOCUMENTS

- [Data Sheet](#)

GALLERY IMAGES

