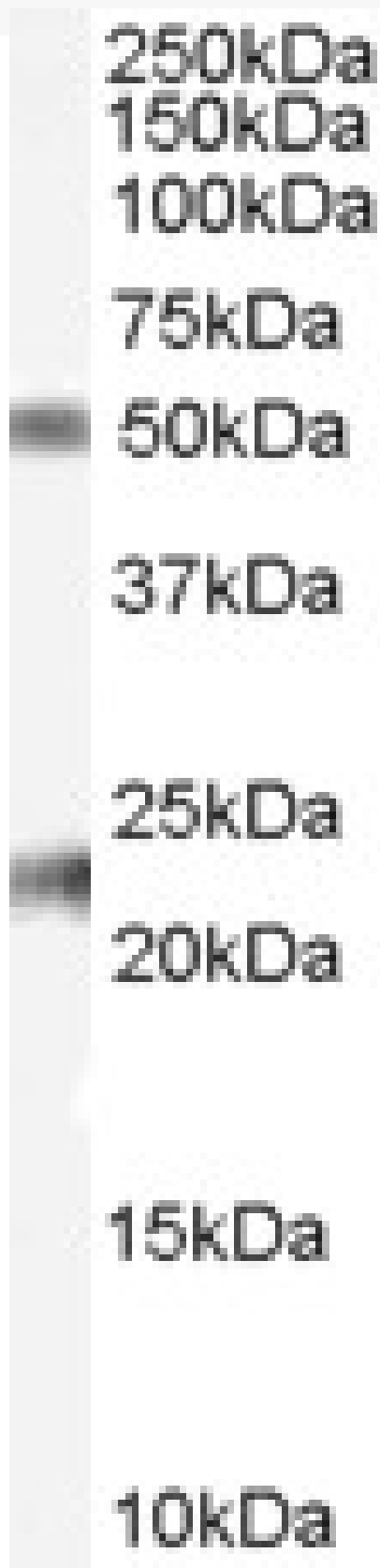


GOAT ANTI-FIBULIN 5 / FBLN5 ANTIBODY

SKU: EB07391



SPECIFICATIONS

Formulation Supplied at 0.5 mg/ml in Tris saline, 0.02% sodium azide, pH7.3 with 0.5% bovine serum albumin.

Unit Size 100 µg

Storage Instructions Aliquot and store at -20°C. Minimize freezing and thawing.

Synonym / Alias Names urine p50 protein|developmental arteries and neural crest epidermal growth factor-like|UP50|FLJ90059|EVEC|DANCE|ARMD3|fibulin 5|FBLN5

Accession ID NP_006320.2

Blocking Peptide EBP07391

Immunogen Peptide with sequence C-RPIKGPREIQLDLE, from the internal region (near the C Terminus) of the protein sequence according to NP_006320.2.

Peptide Sequence C-RPIKGPREIQLDLE

Purification Method Purified from goat serum by ammonium sulphate precipitation followed by antigen affinity chromatography using the immunizing peptide.

Shipping Instructions Refrigerated

Predicted Species Human, Mouse, Rat, Dog

Reactive Species Human

Human Gene ID 10516

Mouse Gene ID 23876

Rat Gene ID 29158

Product Grade https://prod-vector-labs-pimcore-assets.s3.us-east-1.amazonaws.com/assets/products/image/elite_medium.png

ELISA Detection Limit Antibody detection limit dilution 1:32000.

Western Blot Approx 50kDa band observed in Human Colon, Heart and Ovary lysates (calculated MW of 50.2kDa according to NP_006320.2). Recommended concentration: 0.1-0.3µg/ml. An additional band of unknown identity was also consistently observed at 23kDa. This band was successfully blocked by incubation with the immunising peptide. We would appreciate any feedback from people in the field - have any results been reported with other antibodies/lysates? Have any further splice variants/modified forms been reported?

Application Type Pep-ELISA, WB

DOCUMENTS

- [Data Sheet](#)

GALLERY IMAGES

