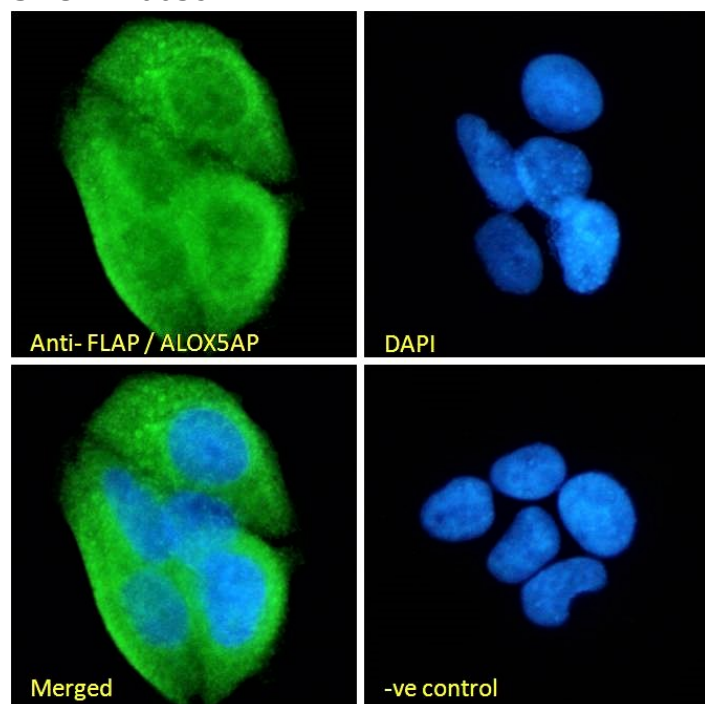


## GOAT ANTI-FLAP / ALOX5AP (C TERM) ANTIBODY

SKU: EB06394



## SPECIFICATIONS

**Formulation** Supplied at 0.5 mg/ml in Tris saline, 0.02% sodium azide, pH7.3 with 0.5% bovine serum albumin.

**Unit Size** 100 µg

**Storage Instructions** Aliquot and store at -20°C. Minimize freezing and thawing.

**Synonym / Alias Names** five-lipoxygenase activating protein|MK-886-binding protein|arachidonate 5-lipoxygenase-activating protein|FLAP|ALOX5AP

**Usage Summary** **Immunofluorescence:** Strong expression of the protein seen in the endoplasmic reticulum of MCF7 cells. Recommended concentration: 10µg/ml. **Flow Cytometry:** Flow cytometric analysis of MCF7 cells. Recommended concentration: 10ug/ml.

**Accession ID** NP\_001620.2; NP\_001191335.1

**Blocking Peptide** EBP06394

<b>Immunogen</b>	Peptide with sequence C-KTISTTISPLLLIP, from the C Terminus of the protein sequence according to NP_001620.2; NP_001191335.1.
<b>Peptide Sequence</b>	C-KTISTTISPLLLIP
<b>Purification Method</b>	Purified from goat serum by ammonium sulphate precipitation followed by antigen affinity chromatography using the immunizing peptide.
<b>Shipping Instructions</b>	Refrigerated
<b>Predicted Species</b>	Human
<b>Reactive Species</b>	Human
<b>Human Gene ID</b>	241
<b>Product Grade</b>	<a href="https://prod-vector-labs-pimcore-assets.s3.us-east-1.amazonaws.com/assets/products/image/elite_plus_medium.png">https://prod-vector-labs-pimcore-assets.s3.us-east-1.amazonaws.com/assets/products/image/elite_plus_medium.png</a>
<b>IHC Results</b>	Paraffin embedded Human Spleen. Recommended concentration: 6µg/ml.
<b>ELISA</b>	
<b>Detection Limit</b>	Antibody detection limit dilution 1:16000.
<b>Application Type</b>	Pep-ELISA, IHC, IF, FC

## DOCUMENTS

- [Data Sheet](#)

## GALLERY IMAGES

