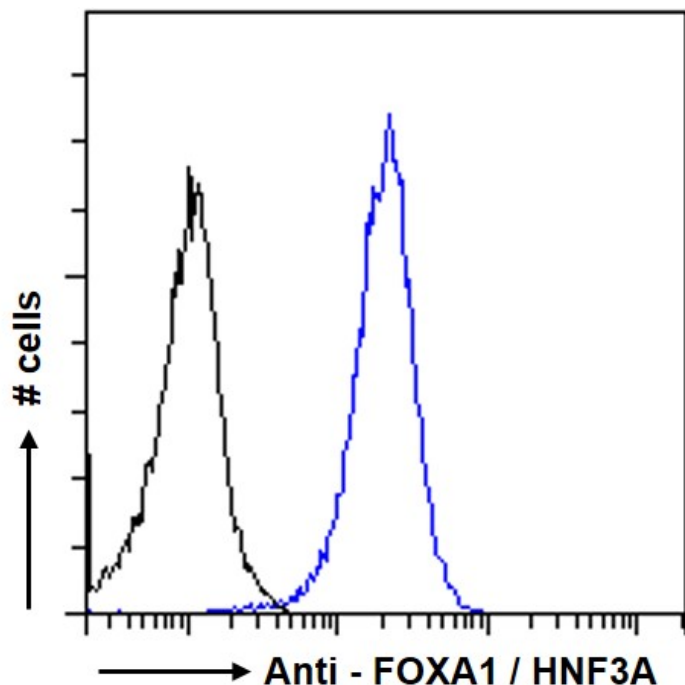


# GOAT ANTI-FOXA1 / HNF3A ANTIBODY

SKU: EB05999



## SPECIFICATIONS

**Formulation** Supplied at 0.5 mg/ml in Tris saline, 0.02% sodium azide, pH7.3 with 0.5% bovine serum albumin.

**Unit Size** 100 µg

**Storage Instructions** Aliquot and store at -20°C. Minimize freezing and thawing.

**Synonym /**

**Alias Names** hepatocyte nuclear factor 3, alpha|MGC33105|TCF3A|forkhead box A1|HNF3A|FOXA1

**Usage Summary** **Immunofluorescence:** Strong expression of the protein seen in the nuclei of MCF7 and U2OS cells. Recommended concentration: 10µg/ml. **Flow Cytometry:** Flow cytometric analysis of MCF7 cells. Recommended concentration: 10ug/ml.

**Accession ID** NP\_004487.2

**Blocking Peptide** EBP05999

**Immunogen** Peptide with sequence C-GVYSRPVLNTS, from the C Terminus of the protein sequence according to NP\_004487.2.

<b>Peptide Sequence</b>	C-GVYSRPVLNTS
<b>Purification Method</b>	Purified from goat serum by ammonium sulphate precipitation followed by antigen affinity chromatography using the immunizing peptide.
<b>Shipping Instructions</b>	Refrigerated
<b>Predicted Species</b>	Human, Mouse, Rat, Pig, Cow
<b>Reactive Species</b>	Human, Mouse
<b>Human Gene ID</b>	3169
<b>Mouse Gene ID</b>	15375
<b>Rat Gene ID</b>	25098
<b>Product Grade</b>	<a href="https://prod-vector-labs-pimcore-assets.s3.us-east-1.amazonaws.com/assets/products/image/elite_plus_medium.png">https://prod-vector-labs-pimcore-assets.s3.us-east-1.amazonaws.com/assets/products/image/elite_plus_medium.png</a>
<b>ELISA Detection Limit</b>	Antibody detection limit dilution 1:128000.
<b>Western Blot</b>	Approx 50kDa band observed in nuclear lysates of cell line HepG2 and approx 50-55kDa in Mouse Liver and in nuclear lysates of cell line MCF7 calculated MW of 49.1kDa according to Human NP_004487.2 and 48.9kDa according to Mouse NP_032285.2). These bands were successfully blocked by incubation with the immunizing peptide. Recommended concentration: 0.1-0.3µg/ml. Primary incubation 1 hour at room temperature.
<b>Application Type</b>	Pep-ELISA, WB, IF, FC

## DOCUMENTS

- [Data Sheet](#)

## GALLERY IMAGES

