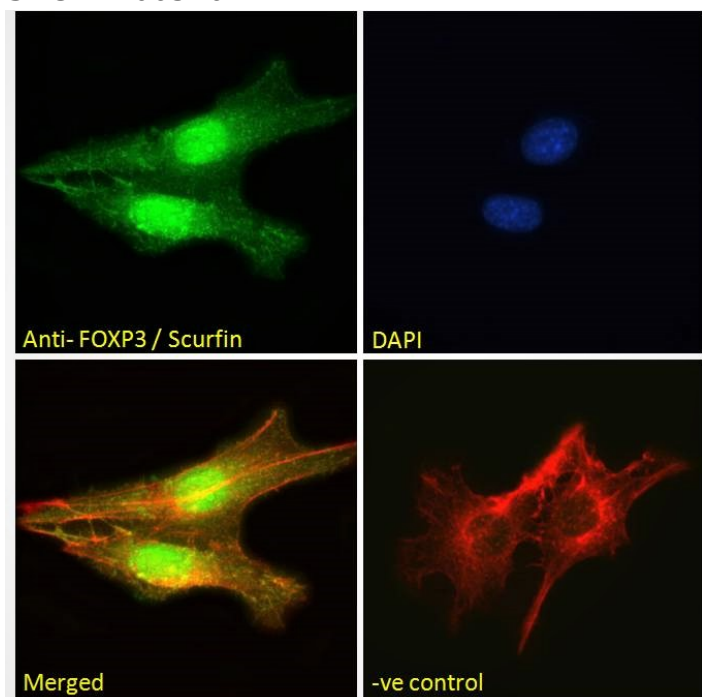


GOAT ANTI-FOXP3 / SCURFIN (MOUSE) ANTIBODY

SKU: EB06376



SPECIFICATIONS

| | |
|------------------------------|--|
| Formulation | Supplied at 0.5 mg/ml in Tris saline, 0.02% sodium azide, pH7.3 with 0.5% bovine serum albumin. |
| Unit Size | 100 µg |
| Storage Instructions | Aliquot and store at -20°C. Minimize freezing and thawing. |
| Synonym / Alias Names | OTTMUSP00000017962 OTTMUSP00000017961 OTTMUSP00000017952 RP23-54C14.1 scurfy scurfin JM2 sf forkhead box P3 Foxp3 |
| Usage Summary | <p>Immunofluorescence: Strong expression of the protein seen in the nuclei of NIH3T3 cells.</p> <p>Recommended concentration: 10µg/ml. Flow Cytometry: Flow cytometric analysis of NIH3T3 cells. Recommended concentration: 10ug/ml.</p> |
| Accession ID | NP_473380.1 |
| Blocking Peptide | EBP06376 |
| Immunogen | Peptide with sequence KRSQRPNKCSNP, from the C Terminus of the protein sequence according to NP_473380.1. |

| | |
|------------------------------|---|
| Product Comments | Note - anti-mouse companion product of EB05294 |
| Peptide Sequence | KRSQRPNKCSNP |
| Purification Method | Purified from goat serum by ammonium sulphate precipitation followed by antigen affinity chromatography using the immunizing peptide. |
| Shipping Instructions | Refrigerated |
| Predicted Species | Mouse, Rat |
| Reactive Species | Mouse |
| Mouse Gene ID | 20371 |
| Rat Gene ID | 317382 |
| Product Grade | https://prod-vector-labs-pimcore-assets.s3.us-east-1.amazonaws.com/assets/products/image/elite_plus_medium.png |
| IHC Results | Paraffin embedded Mouse Spleen. Recommended concentration: 5-6µg/ml. |
| ELISA | |
| Detection Limit | Antibody detection limit dilution 1:32000. |
| Application Type | Pep-ELISA, IHC, IF, FC |

DOCUMENTS

- [Data Sheet](#)

GALLERY IMAGES

