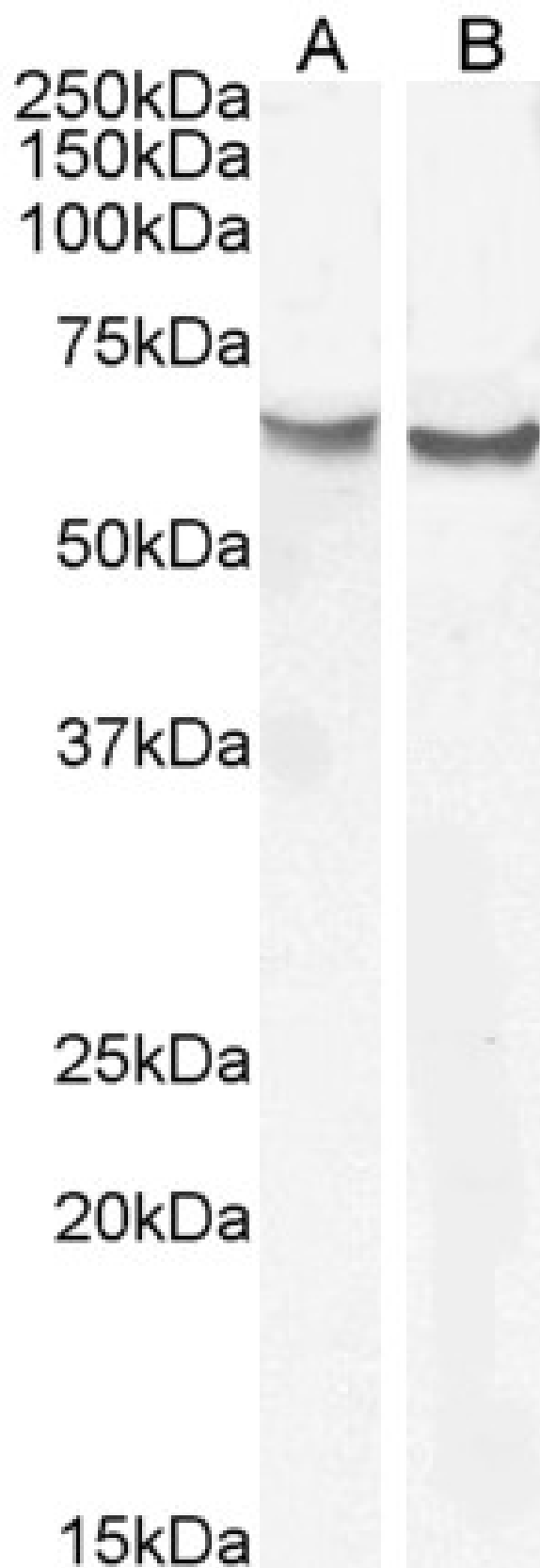


# GOAT ANTI-FRIZZLED 2 ANTIBODY

**SKU:** EB08353



## SPECIFICATIONS

<b>Formulation</b>	Supplied at 0.5 mg/ml in Tris saline, 0.02% sodium azide, pH7.3 with 0.5% bovine serum albumin.
<b>Unit Size</b>	100 µg
<b>Storage Instructions</b>	Aliquot and store at -20°C. Minimize freezing and thawing.
<b>Synonym / Alias</b>	frizzled 2 frizzled homolog 2 (Drosophila) FZD2
<b>Names</b>	
<b>Usage</b>	<strong>Immunofluorescence:</strong> Strong expression of the protein seen in the nuclei and cytoplasm of U2OS cells. Recommended concentration: 10µg/ml.
<b>Summary</b>	
<b>Accession ID</b>	NP_001457.1
<b>Blocking Peptide</b>	EBP08353
<b>Immunogen</b>	Peptide with sequence RYATLEHPFHCPR, from the internal region of the protein sequence according to NP_001457.1.
<b>Peptide Sequence</b>	RYATLEHPFHCPR
<b>Purification Method</b>	Purified from goat serum by ammonium sulphate precipitation followed by antigen affinity chromatography using the immunizing peptide.
<b>Shipping Instructions</b>	Refrigerated
<b>Predicted Species</b>	Human, Mouse, Rat
<b>Reactive Species</b>	Human
<b>Human Gene ID</b>	2535
<b>Mouse Gene ID</b>	57265
<b>Rat Gene ID</b>	64512
<b>Product Grade</b>	<a href="https://prod-vector-labs-pimcore-assets.s3.us-east-1.amazonaws.com/assets/products/image/elite_plus_medium.png">https://prod-vector-labs-pimcore-assets.s3.us-east-1.amazonaws.com/assets/products/image/elite_plus_medium.png</a>
<b>IHC Results</b>	In paraffin embedded Human Thyroid Gland shows cytoplasm and membranous staining in epithelial cells of the follicles. Recommended concentration: 2-5µg/ml. Paraffin embedded Human Liver. Recommended concentration: 2.5µg/ml.
<b>ELISA Detection Limit</b>	Antibody detection limit dilution 1:64000.
<b>Western Blot</b>	Approx 60-65kDa band observed in Human Heart and Placenta lysates (calculated MW of 63.6 kDa according to NP_001457.1) An additional band of approx. 24kDa was also observed in some lysates which was successfully blocked by incubation with the immunizing peptide. Recommended concentration: 0.03-0.1µg/ml. Primary incubation 1 hour at room temperature.

**Application Type**    Pep-ELISA, WB, IF, IHC

## SELECTED REFERENCES

[{"pmid": 23748645, "intro": "**This antibody has been successfully used in IHC on Human:**", "title": "Immunoreactivity of Wnt5a, Fzd2, Fzd6, and Ryk in glioblastoma: evaluative methodology for DAB chromogenic immunostaining.", "author": "Hirano H, Yonezawa H, Yunoue S, Habu M, Uchida H, Yoshioka T, Kishida S, Kishida M, Oyoshi T, Fujio S, Sugata S, Yamahata H, Hanaya R, Arita K.", "journal": "Brain Tumor Pathol. 2014 Apr;31(2):85-93."}, {"pmid": 35724395, "intro": "**This antibody has been successfully used in IHC:**", "title": "Case report: molecular analysis of congenital glioblastoma in a newborn", "author": "Alexandra Marácz, Béla Kajtár, Ádám Nagy, Eszter Györke, Petra Görög, Józsefné Kurucz, Bernadette Kálmán, Ferenc Garzuly", "journal": "Magy Onkol. 2022 Jun 20;66(2):162-167."}]

## DOCUMENTS

- [Data Sheet](#)

## GALLERY IMAGES

