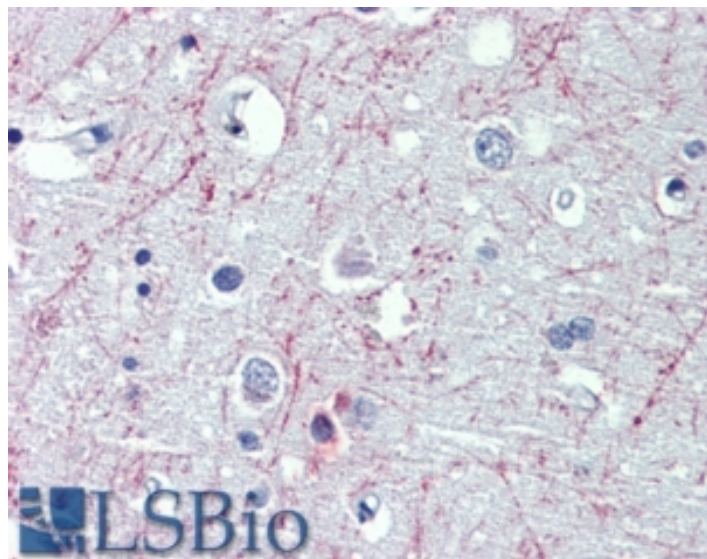


# GOAT ANTI-GABBR1 ANTIBODY

**SKU:** EB09093



## SPECIFICATIONS

<b>Formulation</b>	Supplied at 0.5 mg/ml in Tris saline, 0.02% sodium azide, pH7.3 with 0.5% bovine serum albumin.
<b>Unit Size</b>	100 µg
<b>Storage</b>	Aliquot and store at -20°C. Minimize freezing and thawing.
<b>Instructions</b>	
<b>Synonym / Alias Names</b>	seven transmembrane helix receptor gamma-aminobutyric acid (GABA) B receptor 1 OTTHUMP00000109099 OTTHUMP00000029116 OTTHUMP00000029115 OTTHUMP00000029114 GABAB, subunit 1c GABA-B receptor hGB1a dJ271M21.1.2 dJ271M21.1.1 GPRC3A GABBR1-3 GABABR1 GABAB(1e) FLJ92613 gamma-aminobutyric acid (GABA) B receptor, 1 GABBR1
<b>Accession ID</b>	NP_001461.1; NP_068703.1; NP_068704.2; NP_068705.2
<b>Blocking Peptide</b>	EBP09093
<b>Immunogen</b>	Peptide with sequence DRLSCDGSRVHLLYK, from the C Terminus of the protein sequence according to NP_001461.1; NP_068703.1; NP_068704.2; NP_068705.2.
<b>Product Comments</b>	This antibody is expected to recognize reported isoforms a, b and c (NP_001461.1, NP_068703.1, NP_068704.2 resp.).
<b>Peptide Sequence</b>	DRLSCDGSRVHLLYK
<b>Purification Method</b>	Purified from goat serum by ammonium sulphate precipitation followed by antigen affinity chromatography using the immunizing peptide.

<b>Shipping Instructions</b>	Refrigerated
<b>Predicted Species</b>	Human, Mouse, Rat, Dog, Cow
<b>Reactive Species</b>	Human
<b>Human Gene ID</b>	2550
<b>Product Grade</b>	<a href="https://prod-vector-labs-pimcore-assets.s3.us-east-1.amazonaws.com/assets/products/image/elite_medium.png">https://prod-vector-labs-pimcore-assets.s3.us-east-1.amazonaws.com/assets/products/image/elite_medium.png</a>
<b>IHC Results</b>	In paraffin embedded Human Cortex shows axonal staining. Recommended concentration: 5-8µg/ml.
<b>ELISA</b>	
<b>Detection Limit</b>	Antibody detection limit dilution 1:4000.
<b>Application Type</b>	Pep-ELISA, IHC

## DOCUMENTS

- [Data Sheet](#)

## GALLERY IMAGES

