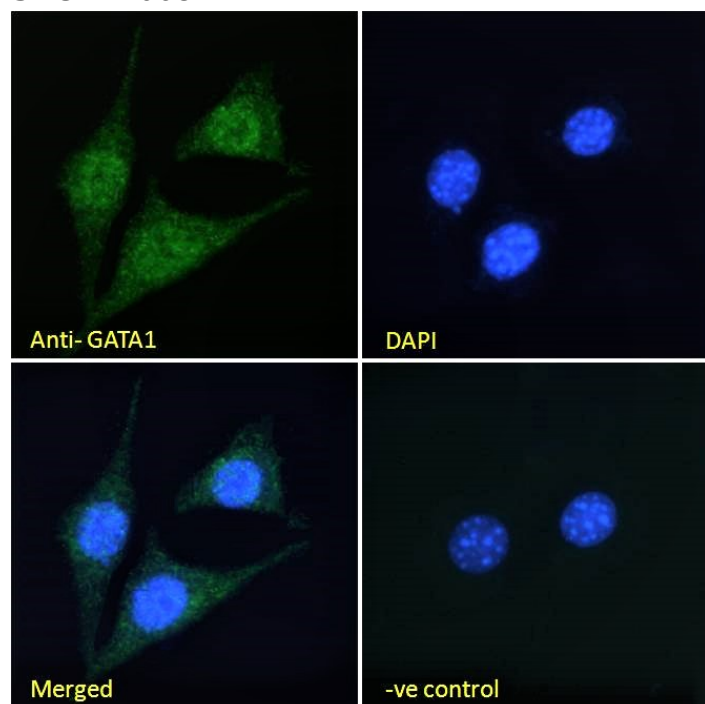


GOAT ANTI-GATA1 ANTIBODY

SKU: EB06874



SPECIFICATIONS

Formulation Supplied at 0.5 mg/ml in Tris saline, 0.02% sodium azide, pH7.3 with 0.5% bovine serum albumin.

Unit Size 100 µg

Storage Instructions Aliquot and store at -20°C. Minimize freezing and thawing.

Synonym / Alias Names erythroid transcription factor 1|NF-E1 DNA-binding protein|XLTT|GF-1|transcription factor GATA1|globin transcription factor 1|erythroid transcription factor 1|GATA-binding protein 1 (globin transcription factor 1)|GATA binding protein 1|NFE1|GF1|ERYF1|HGNC:4170|GATA binding protein 1 (globin transcription factor 1)|GATA1

Usage Summary **Immunofluorescence:** Strong expression of the protein seen in the nuclei of HeLa and NIH3T3 cells. Recommended concentration: 10µg/ml. **Flow Cytometry:** Flow cytometric analysis of K562 cells. Recommended concentration: 10ug/ml.

Accession ID NP_002040.1

Blocking Peptide EBP06874

Immunogen	Peptide with sequence C-DAEAYRHSPVFQ, from the internal region of the protein sequence according to NP_002040.1.
Peptide Sequence	C-DAEAYRHSPVFQ
Purification Method	Purified from goat serum by ammonium sulphate precipitation followed by antigen affinity chromatography using the immunizing peptide.
Shipping Instructions	Refrigerated
Predicted Species	Human, Mouse, Rat, Dog, Cow
Reactive Species	Human, Mouse
Human Gene ID	2623
Product Grade	https://prod-vector-labs-pimcore-assets.s3.us-east-1.amazonaws.com/assets/products/image/elite_plus_medium.png
ELISA Detection Limit	Antibody detection limit dilution 1:16000.
Western Blot	Approx 50-55kDa band observed in nuclear lysates of cell line K562 calculated MW of 42.8kDa according to NP_002040.1). This molecular weight is routinely observed by other sources. Recommended concentration: 0.3-1µg/ml. Primary incubation 1 hour at room temperature. Negative Control: Human Hippocampus lysate.
Application Type	Pep-ELISA, WB, IF, FC

DOCUMENTS

- [Data Sheet](#)

GALLERY IMAGES

