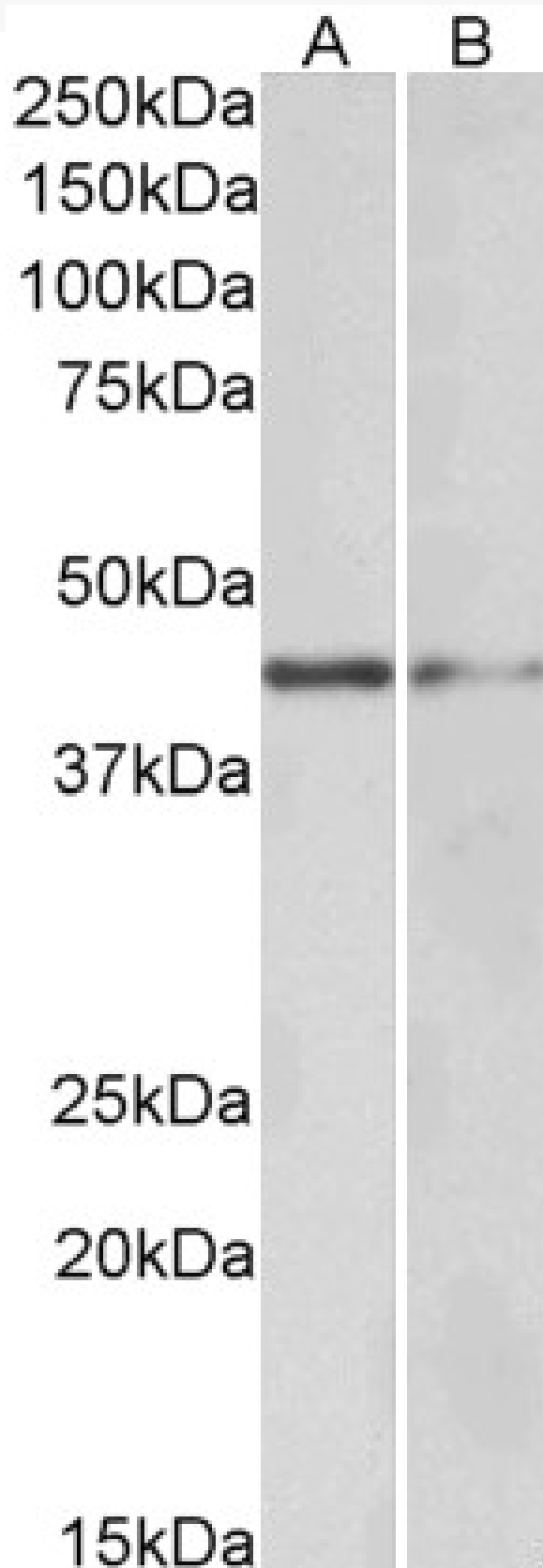


GOAT ANTI-GATA3 ANTIBODY

SKU: EB05570



SPECIFICATIONS

Formulation	Supplied at 0.5 mg/ml in Tris saline, 0.02% sodium azide, pH7.3 with 0.5% bovine serum albumin.
Unit Size	100 µg
Storage Instructions	Aliquot and store at -20°C. Minimize freezing and thawing.
Synonym / Alias Names	enhancer-binding protein GATA3 GATA-binding protein 3 MGC5445 MGC5199 MGC2346 HDR GATA binding protein 3 GATA3
Accession ID	NP_001002295.1; NP_002042.1
Blocking Peptide	EBP05570
Immunogen	Peptide with sequence EVTADQPRWVSHH-C, from the N Terminus of the protein sequence according to NP_001002295.1; NP_002042.1.
Product Comments	This antibody is expected to recognize both reported isoforms (NP_001002295.1 and NP_002042.1).
Peptide Sequence	EVTADQPRWVSHH-C
Purification Method	Purified from goat serum by ammonium sulphate precipitation followed by antigen affinity chromatography using the immunizing peptide.
Shipping Instructions	Refrigerated
Predicted Species	Human, Mouse, Rat, Dog, Pig, Cow
Reactive Species	Human, Mouse
Human Gene ID	2625
Mouse Gene ID	14462
Product Grade	https://prod-vector-labs-pimcore-assets.s3.us-east-1.amazonaws.com/assets/products/image/elite_medium.png
ELISA Detection Limit	Antibody detection limit dilution 1:64000.
Western Blot	Approx 46kDa band observed in Human Tonsil and in Mouse Kidney lysates. (calculated MW of 47.9kDa according to NP_002042.1 and Mouse NP_032117.1). Recommended concentration: 0.3-1µg/ml.
Application Type	Pep-ELISA, WB

DOCUMENTS

- [Data Sheet](#)

GALLERY IMAGES

