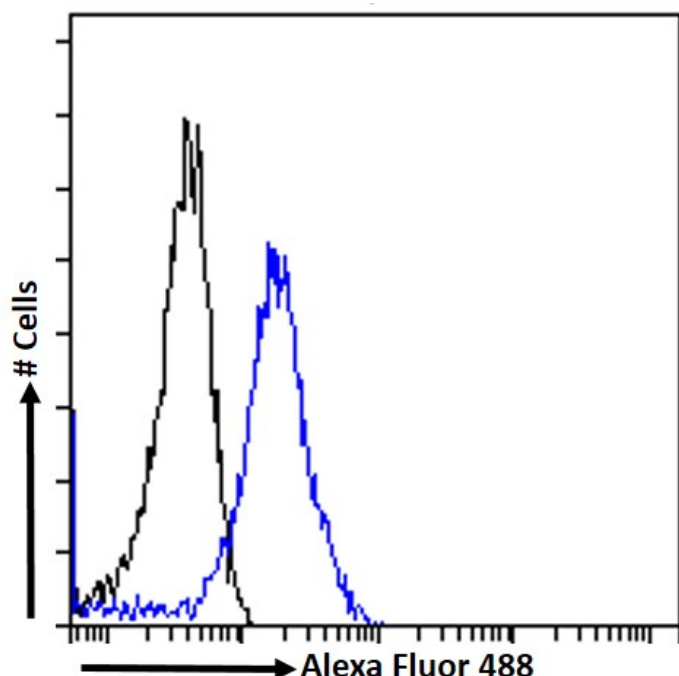


# GOAT ANTI-GDF15 ANTIBODY

SKU: EB06909



## SPECIFICATIONS

**Formulation** Supplied at 0.5 mg/ml in Tris saline, 0.02% sodium azide, pH7.3 with 0.5% bovine serum albumin.

**Unit Size** 100 µg

**Storage Instructions** Aliquot and store at -20°C. Minimize freezing and thawing.

**Synonym / Alias Names** NSAID (nonsteroidal anti-inflammatory drug)-activated protein 1|prostate differentiation factor|PTGF-beta|growth differentiation factor 15|GDF-15|PTGFB|NAG-1|MIC-1|PLAB|MIC1|PDF|GDF15

**Usage Summary** <strong>Flow Cytometry:</strong> Flow cytometric analysis of K562 cells. Recommended concentration: 10ug/ml.

**Accession ID** NP\_004855.2

**Blocking Peptide** EBP06909

**Immunogen** Peptide with sequence C-QKTDGVSLSQTYDD, from the C Terminus of the protein sequence according to NP\_004855.2.

<b>Peptide Sequence</b>	C-QKTDGVS LQTYDD
<b>Purification Method</b>	Purified from goat serum by ammonium sulphate precipitation followed by antigen affinity chromatography using the immunizing peptide.
<b>Shipping Instructions</b>	Refrigerated
<b>Predicted Species</b>	Human
<b>Reactive Species</b>	Human
<b>Human Gene ID</b>	9518
<b>Product Grade</b>	<a href="https://prod-vector-labs-pimcore-assets.s3.us-east-1.amazonaws.com/assets/products/image/elite_medium.png">https://prod-vector-labs-pimcore-assets.s3.us-east-1.amazonaws.com/assets/products/image/elite_medium.png</a>
<b>ELISA Detection Limit</b>	Antibody detection limit dilution 1:4000.
<b>Western Blot</b>	Approx. 35-37kDa band observed in lysates of cell lines K562 and LNCaP, and approx. 35-37kDa in preliminary testing of HepG2 cell lysate, and in Mouse and Rat Testes lysate (calculated MW of 34.1kDa according to NP_004855.2). Recommended concentration 1-2ug/ul. Primary incubation 1 hour at room temperature.
<b>Application Type</b>	Pep-ELISA, WB, FC

## DOCUMENTS

- [Data Sheet](#)

## GALLERY IMAGES

