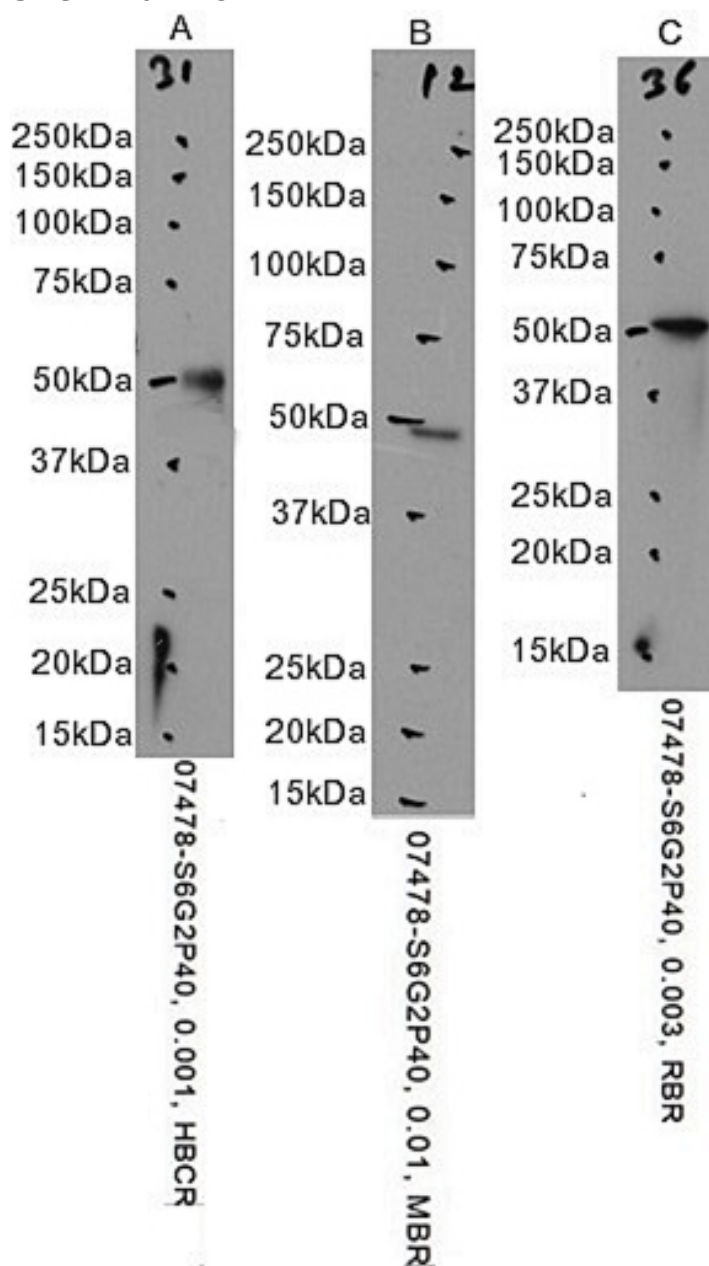


GOAT ANTI-GFAP ANTIBODY

SKU: EB07478



SPECIFICATIONS

Formulation	Supplied at 0.5 mg/ml in Tris saline, 0.02% sodium azide, pH7.3 with 0.5% bovine serum albumin.
Unit Size	100 µg
Storage	
Instructions	Aliquot and store at -20°C. Minimize freezing and thawing.
Synonym /	
Alias	intermediate filament protein FLJ45472 glial fibrillary acidic protein GFAP
Names	
Accession	
ID	NP_002046.1
Blocking	
Peptide	EBP07478
Immunogen	Peptide with sequence C-DGEVIKESKQEHKD, from the C Terminus of the protein sequence according to NP_002046.1.
Product	GFAP is thought to help to maintain astrocyte mechanical strength, as well as the shape of cells but its exact
Comments	function remains poorly understood, despite the number of studies using it as a cell marker.
Peptide	
Sequence	C-DGEVIKESKQEHKD
Purification	Purified from goat serum by ammonium sulphate precipitation followed by antigen affinity chromatography using
Method	the immunizing peptide.
Shipping	
Instructions	Refrigerated
Predicted	
Species	Human, Mouse, Rat, Dog
Reactive	
Species	Human, Mouse, Rat
Human	
Gene ID	2670
Mouse	
Gene ID	14580
Rat Gene ID	24387
Product	
Grade	https://prod-vector-labs-pimcore-assets.s3.us-east-1.amazonaws.com/assets/products/image/elite_plus_medium.png
ELISA	
Detection	Antibody detection limit dilution 1:64000.
Limit	
Western	Approx. 50kDa band observed in Human Cerebellum and Rat Brain lysates and approx. 48kDa in Mouse Brain
Blot	lysates (calculated MW of 49.9kDa according to Human NP_002046.1, Mouse NP_034407.2 and Rat NP_058705.2). Recommended concentration: 0.001-0.1µg/ml. Primary incubation 1 hour at room temperature.
Application	
Type	Pep-ELISA, WB

DOCUMENTS

- [Data Sheet](#)

GALLERY IMAGES

