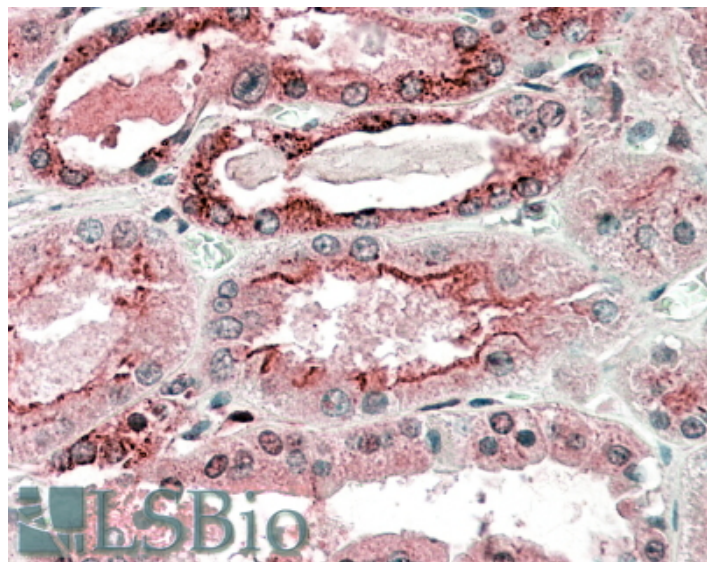


# GOAT ANTI-GGCX ANTIBODY

**SKU:** EB09476



## SPECIFICATIONS

**Formulation** Supplied at 0.5 mg/ml in Tris saline, 0.02% sodium azide, pH7.3 with 0.5% bovine serum albumin.

**Unit Size** 100 µg

**Storage Instructions** Aliquot and store at -20°C. Minimize freezing and thawing.

**Synonym /**

**Alias Names** vitamin K-dependent gamma-carboxylase|VKCFD1|FLJ26629|gamma-glutamyl carboxylase|GGCX

**Accession ID** NP\_000812.2; NP\_001135741.1

**Blocking Peptide** EBP09476

**Immunogen** Peptide with sequence C-PPESNPDPVHSE, from the C Terminus of the protein sequence according to NP\_000812.2; NP\_001135741.1.

**Product Comments** This antibody is expected to recognize both isoforms (NP\_000812.2; NP\_001135741.1).

**Peptide Sequence** C-PPESNPDPVHSE

**Purification Method** Purified from goat serum by ammonium sulphate precipitation followed by antigen affinity chromatography using the immunizing peptide.

<b>Shipping Instructions</b>	Refrigerated
<b>Predicted Species</b>	Human, Dog
<b>Reactive Species</b>	Human
<b>Human Gene ID</b>	2677
<b>Product Grade</b>	<a href="https://prod-vector-labs-pimcore-assets.s3.us-east-1.amazonaws.com/assets/products/image/elite_medium.png">https://prod-vector-labs-pimcore-assets.s3.us-east-1.amazonaws.com/assets/products/image/elite_medium.png</a>
<b>IHC Results</b>	In paraffin embedded Human Kidney shows distinct staining in the cytoplasm of epithelial cells. Recommended concentration: 5-10µg/ml.
<b>ELISA</b>	
<b>Detection Limit</b>	Antibody detection limit dilution 1:32000.
<b>Western Blot</b>	Approx 85kDa band observed in Human Muscle lysates (calculated MW of 85kDa according to NP_000812.2). Recommended concentration: 0.3-1µg/ml. Primary incubation was 1 hour.
<b>Application Type</b>	Pep-ELISA, WB, IHC

## DOCUMENTS

- [Data Sheet](#)

## GALLERY IMAGES

