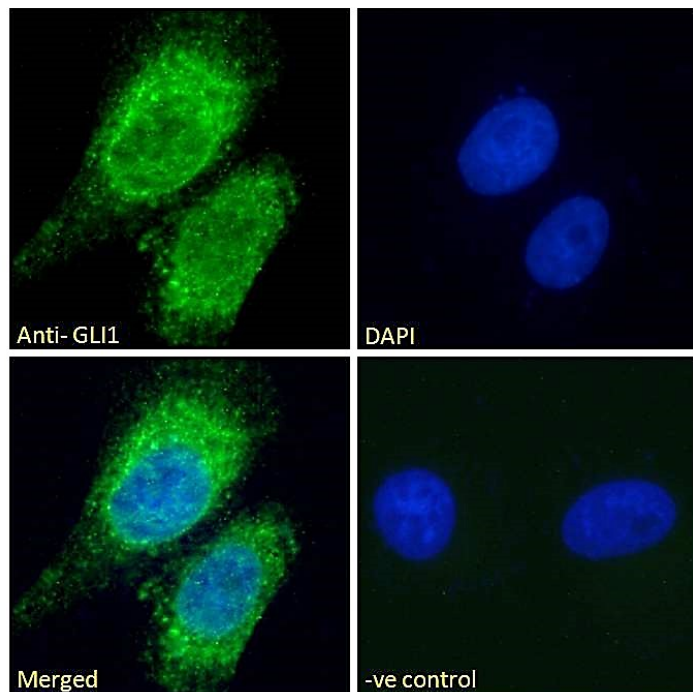


GOAT ANTI-GLI1 ANTIBODY

SKU: EB07027



SPECIFICATIONS

Formulation Supplied at 0.5 mg/ml in Tris saline, 0.02% sodium azide, pH7.3 with 0.5% bovine serum albumin.

Unit Size 100 µg

Storage Instructions Aliquot and store at -20°C. Minimize freezing and thawing.

Synonym / Alias Names glioma-associated oncogene homolog 1 (zinc finger protein)|glioma-associated oncogene family zinc finger 1|GLI family zinc finger 1|Tax Helper Protein|glioma-associated oncogene homolog 1|glioma-associated oncogene homolog (zinc finger protein)|GLI|HGNC:4317|glioma-associated oncogene homolog 1 (zinc finger protein)|GLI1

Usage Summary **Immunofluorescence:** Strong expression of the protein seen in the cytoplasm and nuclei of U2OS cells. Recommended concentration: 10µg/ml.

Accession ID NP_005260.1; NP_001153517.1; NP_001161081.1

Blocking Peptide EBP07027

Immunogen	Peptide with sequence C-EDAPAQEPSYQSPK, from the internal region of the protein sequence according to NP_005260.1; NP_001153517.1; NP_001161081.1.
Peptide Sequence	C-EDAPAQEPSYQSPK
Purification Method	Purified from goat serum by ammonium sulphate precipitation followed by antigen affinity chromatography using the immunizing peptide.
Shipping Instructions	Refrigerated
Predicted Species	Human
Reactive Species	Human
Human Gene ID	2735
Product Grade	https://prod-vector-labs-pimcore-assets.s3.us-east-1.amazonaws.com/assets/products/image/elite_medium.png
ELISA Detection Limit	Antibody detection limit dilution 1:8000.
Application Type	Pep-ELISA, IF

DOCUMENTS

- [Data Sheet](#)

GALLERY IMAGES

