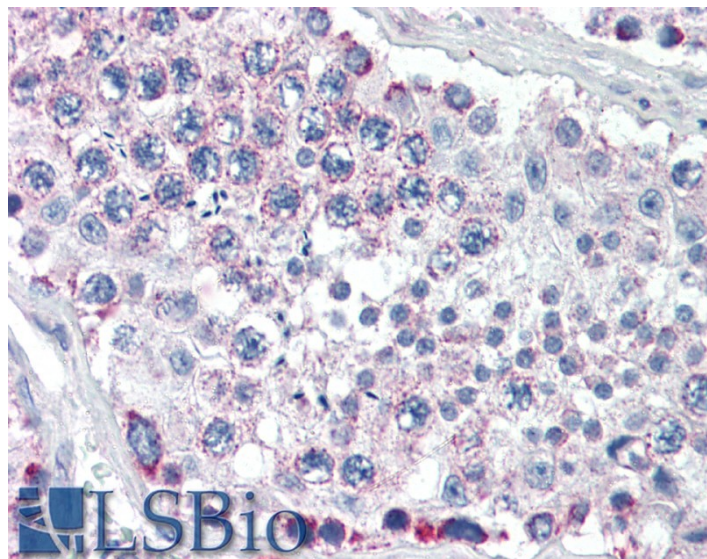


GOAT ANTI-GPSM2 ANTIBODY

SKU: EB07596



SPECIFICATIONS

Formulation Supplied at 0.5 mg/ml in Tris saline, 0.02% sodium azide, pH7.3 with 0.5% bovine serum albumin.

Unit Size 100 µg

Storage Instructions Aliquot and store at -20°C. Minimize freezing and thawing.

Synonym /

Alias LGN protein|Pins|LGN|HGNC:29501|G-protein signalling modulator 2 (AGS3-like, C. elegans)|GPSM2

Names

Usage Summary Immunofluorescence: Strong expression of the protein seen in the cytoplasm/ centrosomes of A431 cells. Recommended concentration: 10µg/ml.

Accession ID NP_037428.2

Blocking Peptide EBP07596

Immunogen Peptide with sequence C-NRLKGKKYKTNSTK, from the internal region of the protein sequence according to NP_037428.2.

Peptide Sequence C-NRLKGKKYKTNSTK

Purification Method Purified from goat serum by ammonium sulphate precipitation followed by antigen affinity chromatography using the immunizing peptide.

Shipping Instructions	Refrigerated
Predicted Species	Human, Dog
Reactive Species	Human
Human Gene ID	29899
Product Grade	https://prod-vector-labs-pimcore-assets.s3.us-east-1.amazonaws.com/assets/products/image/elite_medium.png
IHC Results	Paraffin embedded Human Testis. Recommended concentration: 5µg/ml.
ELISA	
Detection Limit	Antibody detection limit dilution 1:64000.
Application Type	Pep-ELISA, IHC, IF

DOCUMENTS

- [Data Sheet](#)

GALLERY IMAGES

