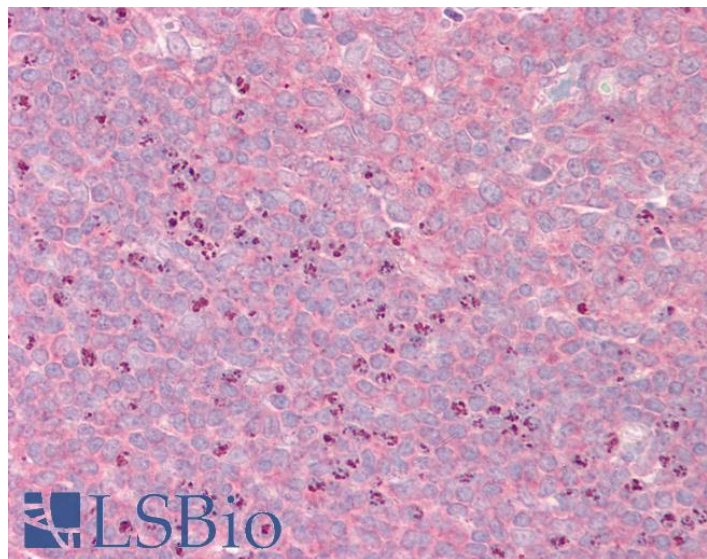


# GOAT ANTI-GRASP1 / GRIPAP1 ANTIBODY

**SKU:** EB06369



## SPECIFICATIONS

<b>Formulation</b>	Supplied at 0.5 mg/ml in Tris saline, 0.02% sodium azide, pH7.3 with 0.5% bovine serum albumin.
<b>Unit Size</b>	100 µg
<b>Storage Instructions</b>	Aliquot and store at -20°C. Minimize freezing and thawing.
<b>Synonym / Alias Names</b>	GRIPAP1 GRASP1 GRASP-1 KIAA1167 DKFZp434P0630 MPMGp800B12492Q3 GRIP1 associated protein 1 GRIP-associated protein 1 MGC126593 MGC126595
<b>Accession ID</b>	NP_064522.3; NP_997555.1
<b>Blocking Peptide</b>	EBP06369
<b>Immunogen</b>	Peptide with sequence LREQTTGLAAELQ-C, from the N Terminus of the protein sequence according to NP_064522.3; NP_997555.1.
<b>Product Comments</b>	This antibody is expected to recognize both reported isoforms (as represented by NP_064522.3; NP_997555.1)
<b>Peptide Sequence</b>	LREQTTGLAAELQ-C
<b>Purification Method</b>	Purified from goat serum by ammonium sulphate precipitation followed by antigen affinity chromatography using the immunizing peptide.

<b>Shipping Instructions</b>	Refrigerated
<b>Predicted Species</b>	Human
<b>Reactive Species</b>	Human
<b>Human Gene ID</b>	56850
<b>Product Grade</b>	<a href="https://prod-vector-labs-pimcore-assets.s3.us-east-1.amazonaws.com/assets/products/image/elite_medium.png">https://prod-vector-labs-pimcore-assets.s3.us-east-1.amazonaws.com/assets/products/image/elite_medium.png</a>
<b>IHC Results</b>	Paraffin embedded Human Tonsil and Brain (Cortex). Recommended concentration: 3.75µg/ml.
<b>ELISA</b>	
<b>Detection Limit</b>	Antibody detection limit dilution 1:32000.
<b>Western Blot</b>	Preliminary experiments gave no signal but low background in Human Brain lysates at up to 1µg/ml.
<b>Application Type</b>	Pep-ELISA, IHC

## DOCUMENTS

- [Data Sheet](#)

## GALLERY IMAGES

