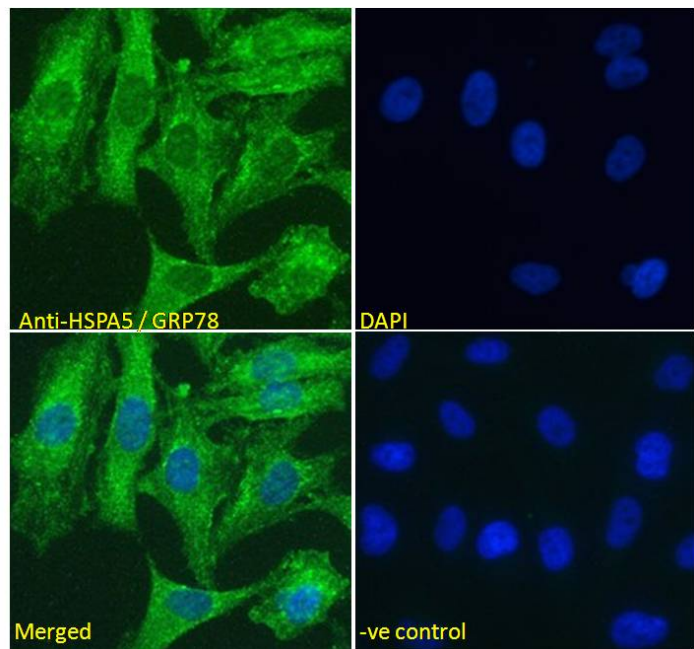


GOAT ANTI-HSPA5 / GRP78 (AA118-131) ANTIBODY

SKU: EB12856



SPECIFICATIONS

Formulation Supplied at 0.5 mg/ml in Tris saline, 0.02% sodium azide, pH7.3 with 0.5% bovine serum albumin.

Unit Size 100 µg

Storage Instructions Aliquot and store at -20°C. Minimize freezing and thawing.

Synonym / Alias Names immunoglobulin heavy chain binding protein Li 89|endoplasmic reticulum luminal Ca(2+)-binding protein grp78|78 kDa glucose-regulated protein|MIF2|HEL-S-89n|GRP78|BIP|heat shock 70kDa protein 5 (glucose-regulated protein, 78kDa)|HSPA5

Usage **Immunofluorescence:** Strong expression of the protein seen in the cytoplasm of HeLa cells.

Summary Recommended concentration: 5µg/ml.

Accession ID NP_005338.1

Blocking Peptide EBP12856

Immunogen Peptide with sequence C-KVVEKTKPYIQVD, from the internal region of the protein sequence according to NP_005338.1.

Peptide Sequence	C-KVVEKTKPYIQVD
Purification Method	Purified from goat serum by ammonium sulphate precipitation followed by antigen affinity chromatography using the immunizing peptide.
Shipping Instructions	Refrigerated
Predicted Species	Human
Reactive Species	Human, Mouse, Rat
Human Gene ID	3309
Product Grade	https://prod-vector-labs-pimcore-assets.s3.us-east-1.amazonaws.com/assets/products/image/elite_medium.png
ELISA Detection Limit	Antibody detection limit dilution 1:128000.
Western Blot	Approx 75kDa band observed in lysates of cell lines HepG2, HeLa and MCF7, and in Mouse Liver and Testis lysates, and approx. 80kDa band in Rat Brain lysates (calculated MW of 72.3kDa according to Human NP_005338.1 and Rat NP_037215.1, and 72.4kDa according to Mouse NP_071705.3). This molecular weight is routinely observed by other sources. Recommended concentration: 0.01-0.1µg/ml. Primary incubation was 1 hour.
Application Type	Pep-ELISA, IF, WB

DOCUMENTS

- [Data Sheet](#)

GALLERY IMAGES

