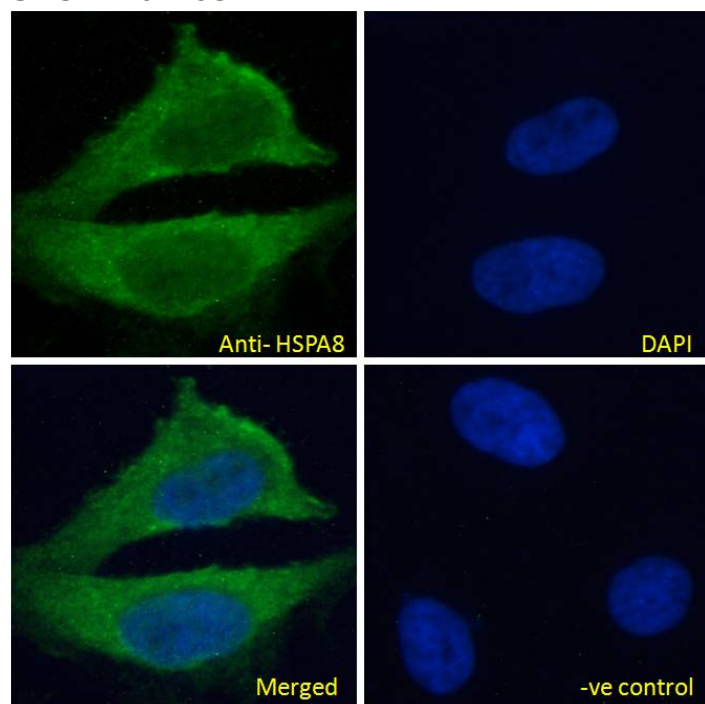


GOAT ANTI-HSPA8 (ISOFORM 1) ANTIBODY

SKU: EB07295



SPECIFICATIONS

Formulation	Supplied at 0.5 mg/ml in Tris saline, 0.02% sodium azide, pH7.3 with 0.5% bovine serum albumin.
Unit Size	100 µg
Storage	
Instructions	Aliquot and store at -20°C. Minimize freezing and thawing.
Synonym / Alias	uncharacterized bone marrow protein BM034 lipopolysaccharide-associated protein 71-kDa heat shock cognate protein heat shock cognate protein 54 heat shock 70kd protein 10 heat shock 70kD protein 8 constitutive heat shock protein 70 N-myristoyltransferase inhibitor protein 71 LPS-associated protein
Names	1 NIP71 MGC29929 MGC131511 LAP HSPA10 HSP73 HSP71 HSC71 HSC70 HSC54 heat shock 70kDa protein 8 HSPA8
Usage	Immunofluorescence: Strong expression of the protein seen in the cytoplasm of HeLa cells.
Summary	Recommended concentration: 10µg/ml
Accession ID	NP_006588.1
Blocking Peptide	EBP07295

Immunogen	Peptide with sequence C-EKLQGKINDEDKQK, from the internal region of the protein sequence according to NP_006588.1.
Product Comments	This antibody is expected to recognise isoform 1 (NP_006588.1) only.
Peptide Sequence	C-EKLQGKINDEDKQK
Purification Method	Purified from goat serum by ammonium sulphate precipitation followed by antigen affinity chromatography using the immunizing peptide.
Shipping Instructions	Refrigerated
Predicted Species	Human, Mouse, Rat, Dog
Reactive Species	Human, Mouse
Human Gene ID	3312
Mouse Gene ID	15481
Rat Gene ID	24468
Product Grade	https://prod-vector-labs-pimcore-assets.s3.us-east-1.amazonaws.com/assets/products/image/elite_plus_medium.png
IHC Results	Paraffin embedded Human Prostate. Recommended concentration: 5µg/ml.
ELISA Detection Limit	Antibody detection limit dilution 1:4000.
Western Blot	Approx 75kDa band observed in lysates of cell lines HepG2 and NIH3T3 (calculated MW of 70.9kDa according to Human NP_006588.1 and Mouse NP_112442.2). This molecular weight is routinely observed by other sources. Recommended concentration: 0.03-0.1µg/ml. Primary incubation 1 hour at room temperature.
Application Type	Pep-ELISA, WB, IF, IHC

DOCUMENTS

- [Data Sheet](#)

GALLERY IMAGES

