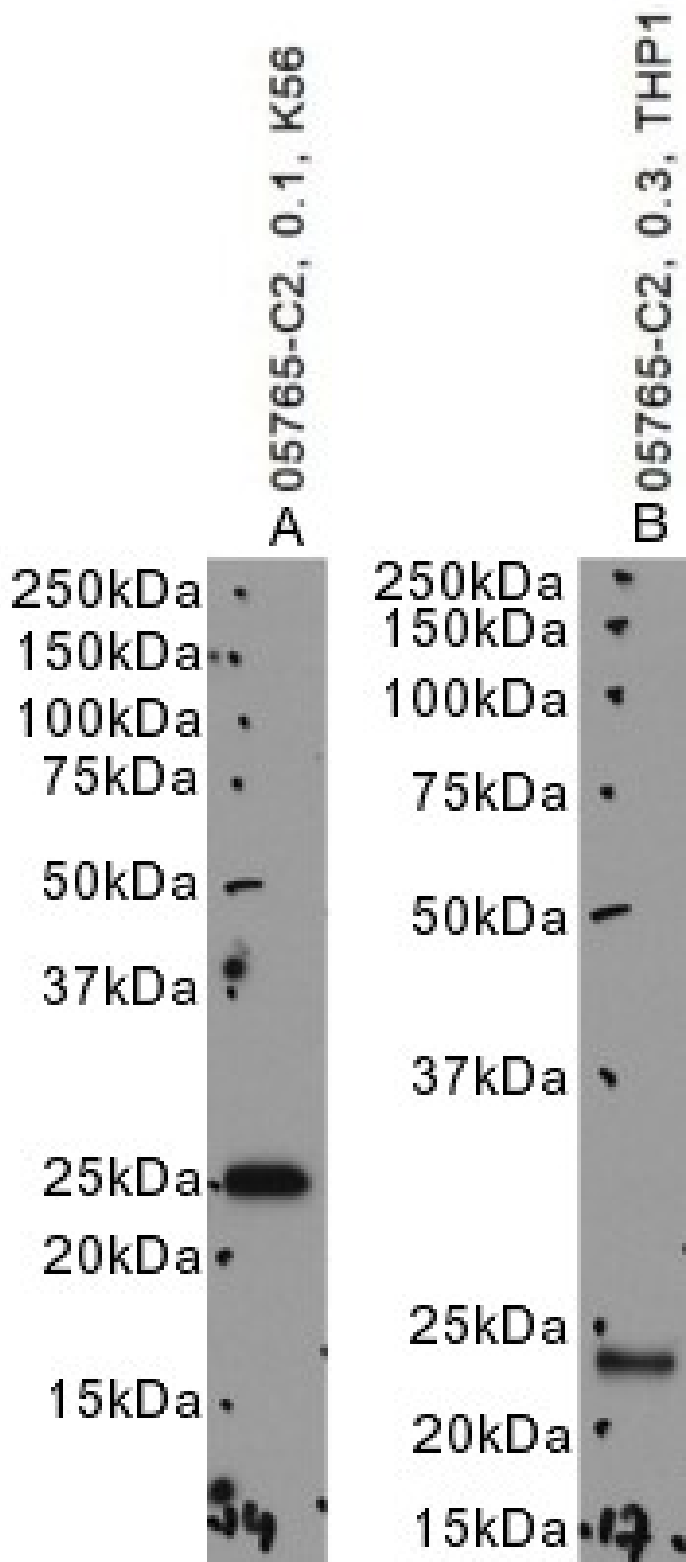


GOAT ANTI-HSPC150 / UBE2T ANTIBODY

SKU: EB05765



SPECIFICATIONS

| | |
|------------------------------|--|
| Formulation | Supplied at 0.5 mg/ml in Tris saline, 0.02% sodium azide, pH7.3 with 0.5% bovine serum albumin. |
| Unit Size | 100 µg |
| Storage | |
| Instructions | Aliquot and store at -20°C. Minimize freezing and thawing. |
| Synonym / Alias Names | ubiquitin-conjugating enzyme E2T ubiquitin-conjugating enzyme E2T (putative) ubiquitin conjugating enzyme HSPC150 protein similar to ubiquitin-conjugating enzyme PIG50 HSPC150 UBE2T |
| Usage Summary | Immunofluorescence: Strong expression of the protein seen in the nuclei of HeLa and U2OS cells. Recommended concentration: 10µg/ml. Flow Cytometry: Flow cytometric analysis of HeLa cells. Recommended concentration: 10ug/ml. |
| Accession ID | NP_054895.1; NP_001297255.1 |
| Blocking Peptide | EBP05765 |
| Immunogen | Peptide with sequence C-QLVGIEKKFHPDV, from the C Terminus of the protein sequence according to NP_054895.1; NP_001297255.1. |
| Peptide Sequence | C-QLVGIEKKFHPDV |
| Purification Method | Purified from goat serum by ammonium sulphate precipitation followed by antigen affinity chromatography using the immunizing peptide. |
| Shipping Instructions | Refrigerated |
| Predicted Species | Human |
| Reactive Species | Human |
| Human Gene ID | 29089 |
| Product Grade | https://prod-vector-labs-pimcore-assets.s3.us-east-1.amazonaws.com/assets/products/image/elite_plus_medium.png |
| ELISA Detection Limit | Antibody detection limit dilution 1:16000. |
| Western Blot | Approx. 23-24kDa band observed in nuclear lysates of cell lines HeLa, Jurkat, HEK293, HepG2 and in THP-1 cell lysates, and approx. 25kDa in nuclear lysates of cell line A431 and in K562, cell lysates (calculated MW of 22.5kDa according to NP_054895.1). Recommended concentration: 0.1-0.3µg/ml. Primary incubation 1 hour at room temperature. |
| Application Type | Pep-ELISA, WB, IF, FC |

DOCUMENTS

- [Data Sheet](#)

GALLERY IMAGES

