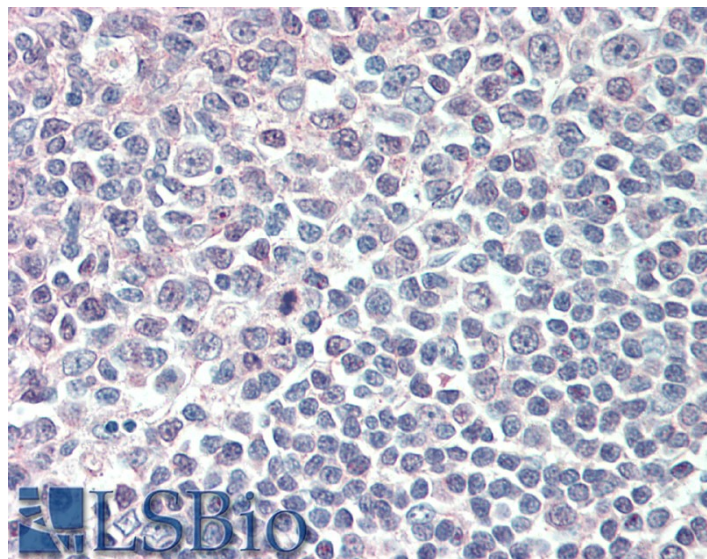


GOAT ANTI-ICSBP1 / IRF8 ANTIBODY

SKU: EB05586



SPECIFICATIONS

Formulation Supplied at 0.5 mg/ml in Tris saline, 0.02% sodium azide, pH7.3 with 0.5% bovine serum albumin.

Unit Size 100 µg

Storage Instructions Aliquot and store at -20°C. Minimize freezing and thawing.

Synonym /

Alias Names interferon regulatory factor 8|H-ICSBP|IRF-8|interferon consensus sequence binding protein 1|ICSBP1|IRF8

Accession ID NP_002154.1

Blocking Peptide EBP05586

Immunogen Peptide with sequence C-QRSFFRENQQITV, from the C Terminus of the protein sequence according to NP_002154.1.

Peptide Sequence C-QRSFFRENQQITV

Purification Method Purified from goat serum by ammonium sulphate precipitation followed by antigen affinity chromatography using the immunizing peptide.

Shipping Instructions Refrigerated

Predicted Species	Human, Mouse, Rat, Cow
Reactive Species	Human
Human Gene ID	3394
Mouse Gene ID	15900
Product Grade	https://prod-vector-labs-pimcore-assets.s3.us-east-1.amazonaws.com/assets/products/image/elite_medium.png
IHC Results	Paraffin embedded Human Tonsil. Recommended concentration: 5µg/ml.
ELISA	
Detection Limit	Antibody detection limit dilution 1:8000.
Western Blot	Approx 45-50kDa band seen in K562 lysate (Predicted MW of 47kDa according to NP_002154.1). Recommended concentration: 0.5-2µg/ml.
Application Type	Pep-ELISA, WB, IHC

DOCUMENTS

- [Data Sheet](#)

GALLERY IMAGES

