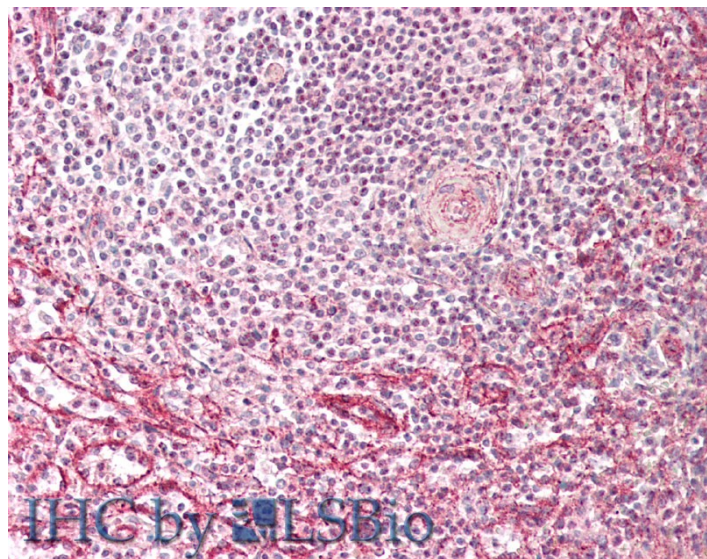


GOAT ANTI-IFITM3 (N TERMINUS) ANTIBODY

SKU: EB12863



SPECIFICATIONS

Formulation	Supplied at 0.5 mg/ml in Tris saline, 0.02% sodium azide, pH7.3 with 0.5% bovine serum albumin.
Unit Size	100 µg
Storage Instructions	Aliquot and store at -20°C. Minimize freezing and thawing.
Synonym / Alias Names	interferon-inducible protein 1-8U interferon-induced transmembrane protein 3 dispanin subfamily A member 2b IP15 DSPA2b 1-8U interferon induced transmembrane protein 3 IFITM3
Accession ID	NP_066362.2
Blocking Peptide	EBP12863
Immunogen	Peptide with sequence HTVQTFFSPVNS-C, from the N terminus of the protein sequence according to NP_066362.2.
Peptide Sequence	HTVQTFFSPVNS-C
Purification Method	Purified from goat serum by ammonium sulphate precipitation followed by antigen affinity chromatography using the immunizing peptide.
Shipping Instructions	Refrigerated

Predicted Species	Human
Reactive Species	Human
Human Gene ID	10410
Product Grade	https://prod-vector-labs-pimcore-assets.s3.us-east-1.amazonaws.com/assets/products/image/elite_medium.png
IHC Results	Paraffin embedded Human Spleen. Recommended concentration: 2.5µg/ml.
ELISA Detection Limit	Antibody detection limit dilution 1:16000.
Western Blot	Approx 17kDa band observed in lysates of cell line HeLa (calculated MW of 14.6kDa according to NP_066362.2). The observed molecular weight corresponds to the lipidated form. Recommended concentration: 0.3-1µg/ml. Primary incubation was 1 hour.
Application Type	Pep-ELISA, WB, IHC

DOCUMENTS

- [Data Sheet](#)

GALLERY IMAGES

