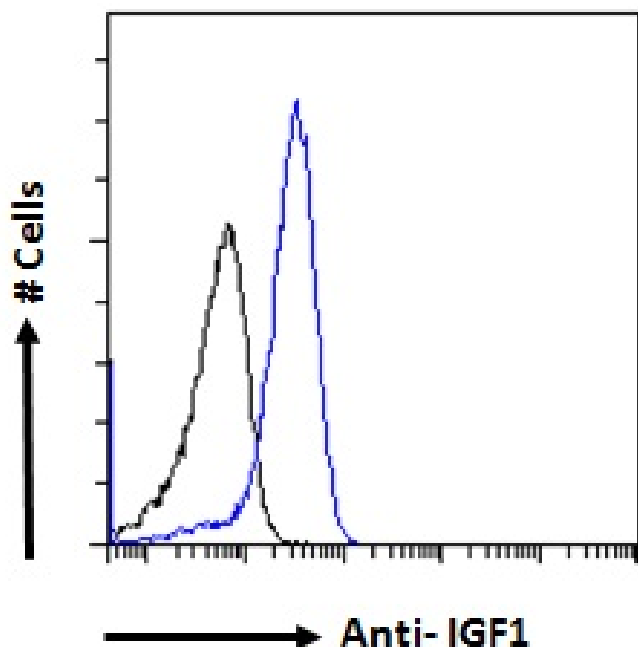


GOAT ANTI-IGF1 ANTIBODY

SKU: EB10358



SPECIFICATIONS

Formulation	Supplied at 0.5 mg/ml in Tris saline, 0.02% sodium azide, pH7.3 with 0.5% bovine serum albumin.
Unit Size	100 µg
Storage	Aliquot and store at -20°C. Minimize freezing and thawing.
Instructions	
Synonym /	
Alias	IGF1 OTTHUMP00000195084 insulin-like growth factor 1 (somatomedin C) insulin-like growth factor 1 IGF1 IGF1A
Names	
Usage	Immunofluorescence: Strong expression of the protein seen in the cytoplasm of HEK293 cells.
Summary	Recommended concentration: 10µg/ml. Flow Cytometry: Flow cytometric analysis of A549 cells. Recommended concentration: 10ug/ml.
Accession ID	NP_001104753.1; NP_001104754.1; NP_001104755.1; NP_000609.1
Blocking Peptide	EBP10358
Immunogen	Peptide with sequence C-RSVRAQRHTD, from the internal region of the protein sequence according to NP_001104753.1; NP_001104754.1; NP_001104755.1; NP_000609.1.

Product	This antibody is expected to recognize all reported isoforms (NP_001104753.1; NP_001104754.1; NP_001104755.1;
Comments	NP_000609.1).
Peptide Sequence	C-RSVRAQRHTD
Purification Method	Purified from goat serum by ammonium sulphate precipitation followed by antigen affinity chromatography using the immunizing peptide.
Shipping Instructions	Refrigerated
Predicted Species	Human, Mouse, Rat, Dog, Cow, Pig
Reactive Species	Human
Human Gene ID	3479
Mouse Gene ID	16000
Rat Gene ID	24482
Product Grade	https://prod-vector-labs-pimcore-assets.s3.us-east-1.amazonaws.com/assets/products/image/elite_plus_medium.png
IHC Results	Paraffin embedded Human Spleen. Recommended concentration: 3.75µg/ml.
ELISA Detection Limit	Antibody detection limit dilution 1:32000.
Western Blot	Approx 15kDa band observed in Human Uterus lysates (calculated MW of 15.2kDa according to NP_001104754.1). Recommended concentration 0.5-2µg/ml. Primary incubation 1 hour at room temperature. Negative Control: HepG2 cell lysate. Preliminary testing was unsuccessful on Mouse and Rat for this particular batch.
Application Type	Pep-ELISA, WB, IHC, IF, FC

SELECTED REFERENCES

[{"pmid": 31682800, "intro": "**This antibody has been successfully used in Western blot on Rat:**", "title": "Ligustrazine prevents basilar artery remodeling in two-kidney-two-clip renovascular hypertension rats via suppressing PI3K/Akt signaling", "author": "Zhang B, Zhang Y, Deng F, Fang S", "journal": "Microvascular Research, Volume 128, March 2020, 103938"}]

DOCUMENTS

- [Data Sheet](#)

GALLERY IMAGES

