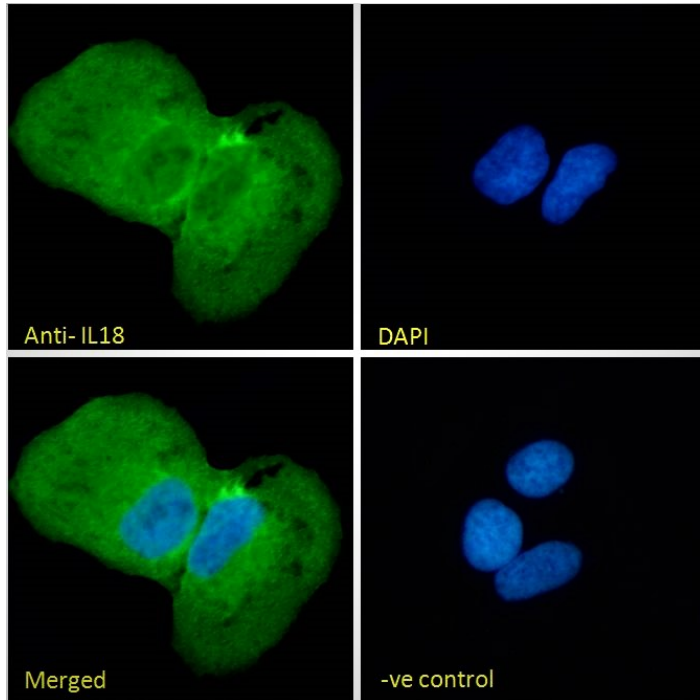




GOAT ANTI-IL18 ANTIBODY

SKU: EB09393



SPECIFICATIONS

Formulation Supplied at 0.5 mg/ml in Tris saline, 0.02% sodium azide, pH7.3 with 0.5% bovine serum albumin.

Unit Size 100 µg

Storage Instructions Aliquot and store at -20°C. Minimize freezing and thawing.

Synonym / Alias Names interleukin-18|interleukin-1 gamma|interleukin 18|interferon-gamma-inducing factor|IL-1 gamma|MGC12320|IL1F4|IL-1g|IL-18|IGIF|interleukin 18 (interferon-gamma-inducing factor)|IL18

Usage Summary **Immunofluorescence:** Strong expression of the protein seen in the golgi and cytoplasm of A431 and U2OS cells. Recommended concentration: 10µg/ml. **Flow Cytometry:** Flow cytometric analysis of A431 cells. Recommended concentration: 10ug/ml.

Accession ID NP_001553.1; NP_001230140.1

Blocking Peptide EBP09393



Immunogen	Peptide with sequence C-NPPDNIKDTKSDI, from the internal region of the protein sequence according to NP_001553.1; NP_001230140.1.
Product Comments	This antibody is expected to recognise both reported isoforms (NP_001553.1; NP_001230140.1).
Peptide Sequence	C-NPPDNIKDTKSDI
Purification Method	Purified from goat serum by ammonium sulphate precipitation followed by antigen affinity chromatography using the immunizing peptide.
Shipping Instructions	Refrigerated
Predicted Species	Human
Reactive Species	Human
Human Gene ID	3606
Rat Gene ID	29197
Product Grade	https://prod-vector-labs-pimcore-assets.s3.us-east-1.amazonaws.com/assets/products/image/elite_plus_medium.png
ELISA Detection Limit	Antibody detection limit dilution 1:32000.
Western Blot	Approx 23kDa band observed in lysates of cell line HeLa and approx. 21-22kDa band in lysates of cell lines A431 and U2OS (calculated MW of 22.3kDa according to NP_001553.1). Recommended concentration: 1-3µg/ml. Primary incubation 1 hour at room temperature.
Application Type	Pep-ELISA, WB, IF, FC

DOCUMENTS

- [Data Sheet](#)

GALLERY IMAGES

