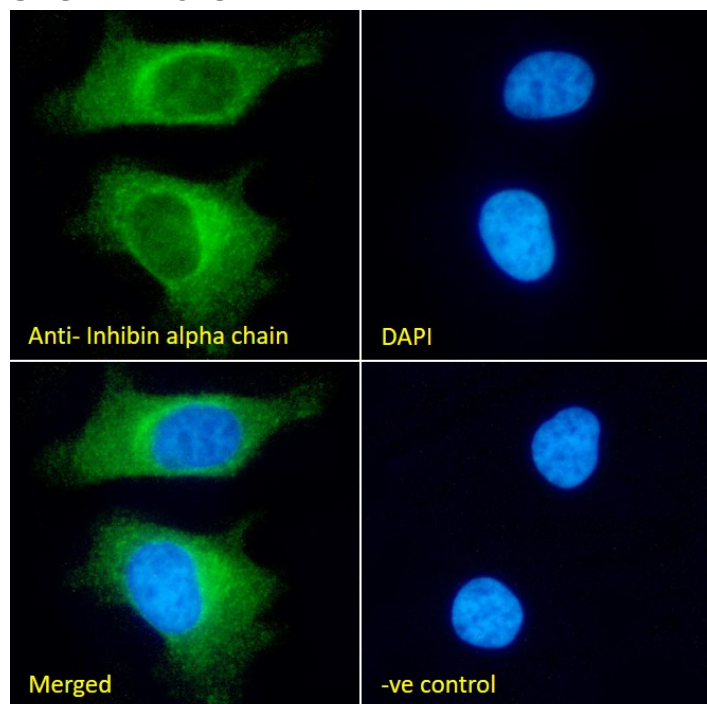


GOAT ANTI-INHIBIN ALPHA CHAIN ANTIBODY

SKU: EB11943



SPECIFICATIONS

Formulation	Supplied at 0.5 mg/ml in Tris saline, 0.02% sodium azide, pH7.3 with 0.5% bovine serum albumin.
Unit Size	100 µg
Storage Instructions	Aliquot and store at -20°C. Minimize freezing and thawing.
Synonym / Alias Names	inhibin alpha chain OTTHUMP00000065425 A-inhibin subunit inhibin, alpha INHA
Usage Summary	<p>Immunofluorescence: Strong expression of the protein seen in HeLa and U2OS cells.</p> <p>Flow Cytometry: Flow cytometric analysis of HeLa cells. Recommended concentration: 10ug/ml.</p>
Accession ID	NP_002182.1
Blocking Peptide	EBP11943

Immunogen	Peptide with sequence C-RPLHVRTTSDGGYS, from the C Terminus of the protein sequence according to NP_002182.1.
Peptide Sequence	C-RPLHVRTTSDGGYS
Purification Method	Purified from goat serum by ammonium sulphate precipitation followed by antigen affinity chromatography using the immunizing peptide.
Shipping Instructions	Refrigerated
Predicted Species	Human, Cow
Reactive Species	Human
Human Gene ID	3623
Product Grade	https://prod-vector-labs-pimcore-assets.s3.us-east-1.amazonaws.com/assets/products/image/elite_plus_medium.png
ELISA Detection Limit	Antibody detection limit dilution 1:128000.
Western Blot	Approx. 40kDa band observed in lysates of cell lines HepG2 and HeLa (calculated MW of 39.7kDa according to NP_002182.1). Recommended concentration: 0.5-1µg/ml. Primary incubation 1 hour at room temperature.
Application Type	Pep-ELISA, WB, IF, FC

DOCUMENTS

- [Data Sheet](#)

GALLERY IMAGES

