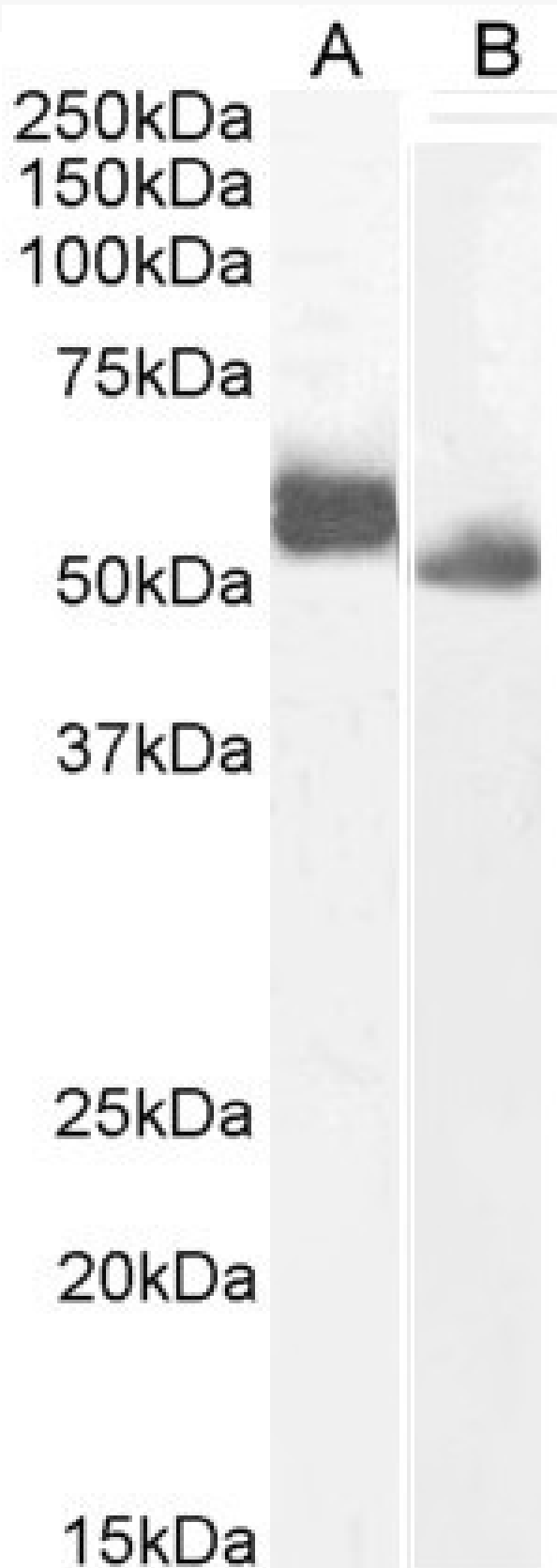


GOAT ANTI-IRF4 (AA393-407) ANTIBODY

SKU: EB11331



SPECIFICATIONS

Formulation	Supplied at 0.5 mg/ml in Tris saline, 0.02% sodium azide, pH7.3 with 0.5% bovine serum albumin.
Unit Size	100 µg
Storage Instructions	Aliquot and store at -20°C. Minimize freezing and thawing.
Synonym / Alias	IRF4 MUM1 multiple myeloma oncogene 1 LSIRF interferon regulatory factor 4
Names	
Usage	<p>Flow Cytometry: Flow cytometric analysis of A431 cells. Recommended concentration: 10ug/ml.</p>
Summary	
Accession ID	NP_002451.2; NP_001182215.1
Blocking Peptide	EBP11331
Immunogen	Peptide with sequence C-DPQRQRKLITAHVEP, from the internal region (near C Terminus) of the protein sequence according to NP_002451.2; NP_001182215.1.
Product Comments	This antibody is expected to recognize both reported isoforms (
Peptide Sequence	C-DPQRQRKLITAHVEP
Purification Method	Purified from goat serum by ammonium sulphate precipitation followed by antigen affinity chromatography using the immunizing peptide.
Shipping Instructions	Refrigerated
Predicted Species	Human, Mouse, Rat, Dog, Cow
Reactive Species	Human, Rat
Human Gene ID	3662
Mouse Gene ID	16364
Rat Gene ID	291100
Product Grade	https://prod-vector-labs-pimcore-assets.s3.us-east-1.amazonaws.com/assets/products/image/elite_plus_medium.png
IHC Results	Paraffin embedded Human Spleen. Recommended concentration: 5µg/ml.
ELISA Detection Limit	Antibody detection limit dilution 1:16000.
Western Blot	Approx 55kDa band observed in Human Spleen and approx 52kDa in Rat Spleen lysates (calculated MW of 51.8kDa according to Human NP_002451.2 and 51.6kDa according to Human NP_001182215.1 and Rat NP_001099578.1). Recommended concentration: 0.1-0.3ug/ml. Primary incubation 1 hour at room temperature.
Application Type	Pep-ELISA, WB, IHC, FC

DOCUMENTS

- [Data Sheet](#)

GALLERY IMAGES

