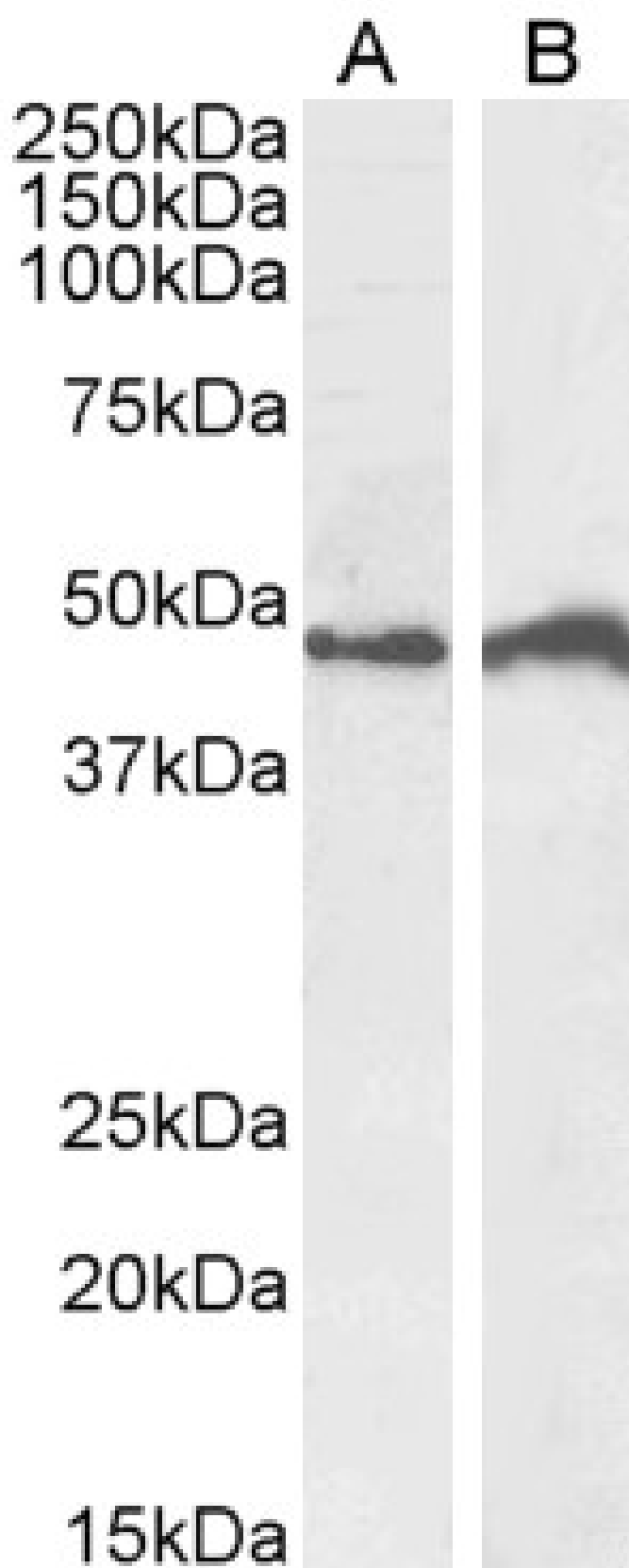


GOAT ANTI-IRF4 ANTIBODY

SKU: EB11330



SPECIFICATIONS

Formulation Supplied at 0.5 mg/ml in Tris saline, 0.02% sodium azide, pH7.3 with 0.5% bovine serum albumin.

Unit Size 100 µg

Storage Instructions Aliquot and store at -20°C. Minimize freezing and thawing.

Synonym /

Alias IRF4| MUM1| multiple myeloma oncogene 1| LSIRF| interferon regulatory factor 4

Names

Accession ID NP_002451.2

Blocking Peptide EBP11330

Immunogen Peptide with sequence C-HISNPEDYHRSIR, from the C Terminus of the protein sequence according to NP_002451.2.

Peptide Sequence C-HISNPEDYHRSIR

Purification Method Purified from goat serum by ammonium sulphate precipitation followed by antigen affinity chromatography using the immunizing peptide.

Shipping Instructions Refrigerated

Predicted Species Human

Reactive Species Human, Mouse

Human Gene ID 3662

Product Grade https://prod-vector-labs-pimcore-assets.s3.us-east-1.amazonaws.com/assets/products/image/elite_medium.png

ELISA

Detection Limit Antibody detection limit dilution 1:64000.

Western Blot Approx 48kDa band observed in lysates of cell lines Daudi and Jurkat and approx,48-50kDa in lysates of cell line NIH3T3 (calculated MW of 51.8kDa according to Human NP_002451.2 and 51.4kDa according to Mouse NP_001334437.1). Recommended concentration: 0.5-2µg/ml. Primary incubation 1 hour at room temperature.

Application Type Pep-ELISA, WB

DOCUMENTS

- [Data Sheet](#)

GALLERY IMAGES

