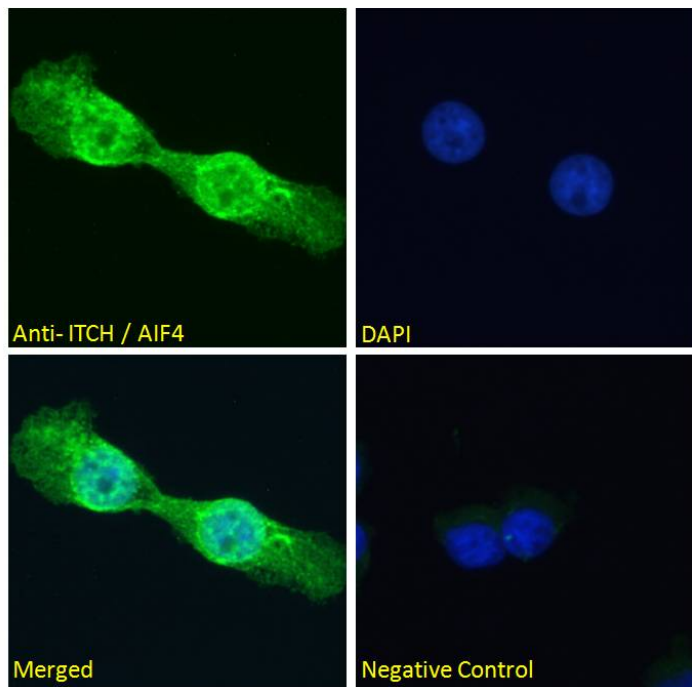


GOAT ANTI-ITCH / AIF4 ANTIBODY

SKU: EB07645



SPECIFICATIONS

Formulation Supplied at 0.5 mg/ml in Tris saline, 0.02% sodium azide, pH7.3 with 0.5% bovine serum albumin.

Unit Size 100 µg

Storage Instructions Aliquot and store at -20°C. Minimize freezing and thawing.

Synonym / Alias Names ubiquitin protein ligase ITCH|itchy homolog E3 ubiquitin protein ligase|dj46801.1 (atrophin 1 interacting protein 4, AIP4)|atrophin-1 interacting protein 4|NFE2-associated polypeptide 1|dj46801.1|NAPP1|AIP4|itchy homolog E3 ubiquitin protein ligase (mouse)|AIF4|ITCH

Usage Summary **Immunofluorescence:** Strong expression of the protein seen in the nuclei of A431 and U2OS cells. Recommended concentration: 10µg/ml. **Flow Cytometry:** Flow cytometric analysis of HeLa cells. Recommended concentration: 10ug/ml.

Accession ID NP_113671.3; NP_001244066.1; NP_001244067.1

Blocking Peptide EBP07645

Immunogen Peptide with sequence C-EIKSHDLKPNGGN, from the internal region of the protein sequence according to NP_113671.3; NP_001244066.1; NP_001244067.1.

Peptide Sequence	C-EIKSHDLKPNGGN
Purification Method	Purified from goat serum by ammonium sulphate precipitation followed by antigen affinity chromatography using the immunizing peptide.
Shipping Instructions	Refrigerated
Predicted Species	Human, Mouse, Rat, Dog, Cow
Reactive Species	Human
Human Gene ID	83737
Mouse Gene ID	16396
Rat Gene ID	311567
Product Grade	https://prod-vector-labs-pimcore-assets.s3.us-east-1.amazonaws.com/assets/products/image/elite_plus_medium.png
ELISA Detection Limit	Antibody detection limit dilution 1:16000.
Western Blot	Approx 90kDa band observed in Human Brain (Frontal Cortex) lysates (calculated MW of 86.4kDa according to NP_001244067.1) . Recommended concentration: 0.1-0.3µg/ml. Primary incubation 1 hour at room temperature.
Application Type	Pep-ELISA, WB, IF, FC

DOCUMENTS

- [Data Sheet](#)

GALLERY IMAGES

