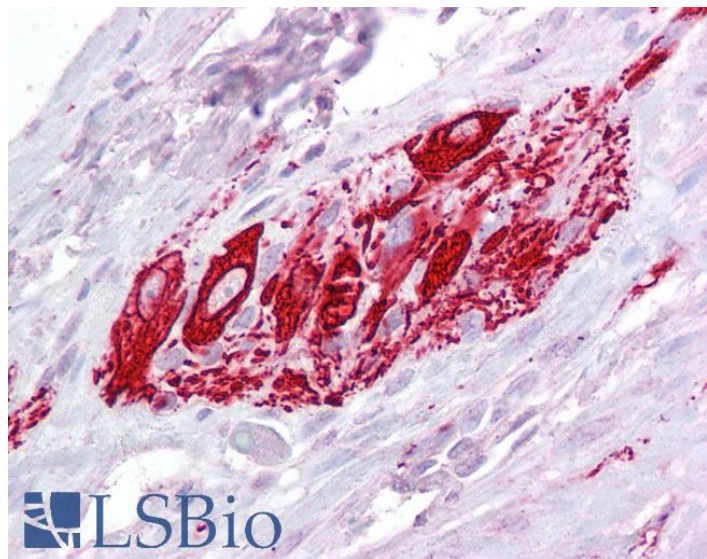


# GOAT ANTI-ITM2B ANTIBODY

**SKU:** EB09138



## SPECIFICATIONS

<b>Formulation</b>	Supplied at 0.5 mg/ml in Tris saline, 0.02% sodium azide, pH7.3 with 0.5% bovine serum albumin.
<b>Unit Size</b>	100 µg
<b>Storage Instructions</b>	Aliquot and store at -20°C. Minimize freezing and thawing.
<b>Synonym / Alias Names</b>	OTTHUMP00000018394 BRICHOS domain containing 2B FBD E3-16 E25B BRICD2B BRI2 BRI ABRI integral membrane protein 2B ITM2B
<b>Usage Summary</b>	<strong>Immunofluorescence:</strong> Strong expression of the protein seen in the cytoplasm and Golgi apparatus of A431 and HeLa cells. Recommended concentration: 10µg/ml. <strong>Flow Cytometry:</strong> Flow cytometric analysis of HeLa cells. Recommended concentration: 10ug/ml.
<b>Accession ID</b>	NP_068839.1
<b>Blocking Peptide</b>	EBP09138
<b>Immunogen</b>	Peptide with sequence C-HDKETYKLQRRETIK, from the internal region of the protein sequence according to NP_068839.1.
<b>Peptide Sequence</b>	C-HDKETYKLQRRETIK
<b>Purification Method</b>	Purified from goat serum by ammonium sulphate precipitation followed by antigen affinity chromatography using the immunizing peptide.

<b>Shipping Instructions</b>	Refrigerated
<b>Predicted Species</b>	Human, Mouse, Rat, Cow
<b>Reactive Species</b>	Human
<b>Human Gene ID</b>	9445
<b>Mouse Gene ID</b>	16432
<b>Rat Gene ID</b>	290364
<b>Product Grade</b>	<a href="https://prod-vector-labs-pimcore-assets.s3.us-east-1.amazonaws.com/assets/products/image/elite_plus_medium.png">https://prod-vector-labs-pimcore-assets.s3.us-east-1.amazonaws.com/assets/products/image/elite_plus_medium.png</a>
<b>IHC Results</b>	Paraffin embedded Human Small Intestine. Recommended concentration: 2.5µg/ml.
<b>ELISA</b>	
<b>Detection Limit</b>	Antibody detection limit dilution 1:8000.
<b>Western Blot</b>	Approx. 30-35kDa band observed in HepG2 cell lysates (calculated MW of 30.3kDa according to NP_068839.1). Recommended concentration: 0.1-0.3µg/ml. Primary incubation 1 hour at room temperature. Preliminary testing was unsuccessful on Rat and Mouse Brain for this particular batch.
<b>Application Type</b>	Pep-ELISA, WB, IHC, IF, FC

## DOCUMENTS

- [Data Sheet](#)

## GALLERY IMAGES

