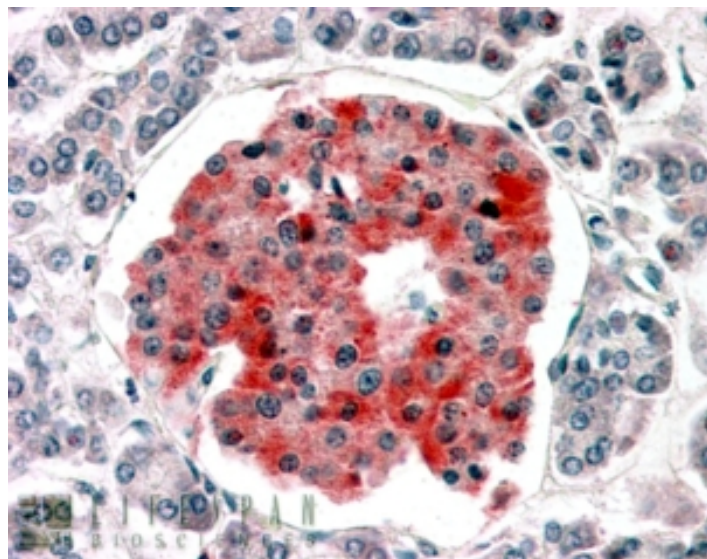


GOAT ANTI-KCNJ11 / KATP / ANTIBODY

SKU: EB07765



SPECIFICATIONS

Formulation	Supplied at 0.5 mg/ml in Tris saline, 0.02% sodium azide, pH7.3 with 0.5% bovine serum albumin.
Unit Size	100 µg
Storage Instructions	Aliquot and store at -20°C. Minimize freezing and thawing.
Synonym / Alias	KCNJ11 KATP potassium inwardly-rectifying channel, subfamily J, member 11 BIR HHF2 KIR6.2 MGC133230 PHHI TNDM3 ATP-sensitive inward rectifier potassium channel 11 beta-cell inward rectifier subunit inwardly rectifying potassium channel KIR6.2 potassium inwardly-rectifying channel J11
Accession ID	NP_000516.3
Blocking Peptide	EBP07765
Immunogen	Peptide with sequence C-AEDPAKPRYRARQ, from the internal region (near the N Terminus) of the protein sequence according to NP_000516.3.
Product Comments	This antibody is expected to recognise isoform 1 (NP_000516.3) only.
Peptide Sequence	C-AEDPAKPRYRARQ
Purification Method	Purified from goat serum by ammonium sulphate precipitation followed by antigen affinity chromatography using the immunizing peptide.

Shipping Instructions	Refrigerated
Predicted Species	Human
Reactive Species	Human
Human Gene ID	3767
Product Grade	https://prod-vector-labs-pimcore-assets.s3.us-east-1.amazonaws.com/assets/products/image/elite_medium.png
IHC Results	In paraffin embedded Human Pancreas shows variable staining across the islet of Langerhans. Recommended concentration, 3-5µg/ml.
ELISA	
Detection Limit	Antibody detection limit dilution 1:32000.
Western Blot	Approx 45-48kDa band observed in Human Skeletal Muscle lysates (calculated MW of 43.5kDa according to NP_000516.3). Recommended concentration: 0.1-0.3µg/ml.
Application Type	Pep-ELISA, WB, IHC

DOCUMENTS

- [Data Sheet](#)

GALLERY IMAGES

