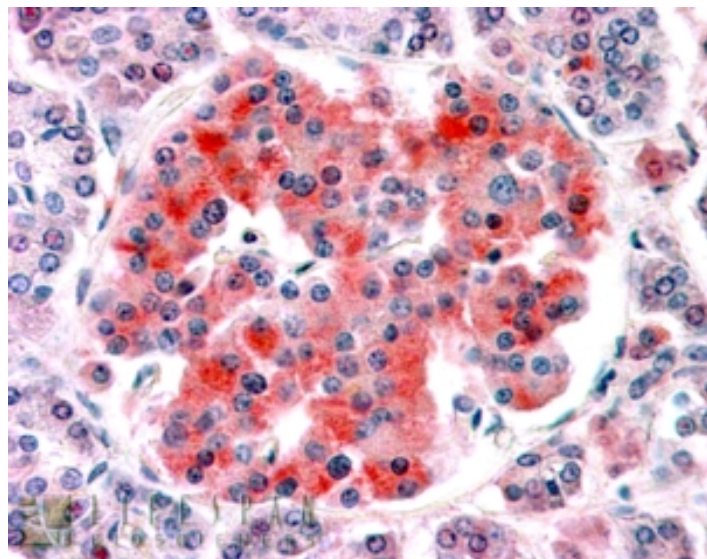


# GOAT ANTI-KCNJ11 / KIR6.2 ANTIBODY

**SKU:** EB07766



## SPECIFICATIONS

**Formulation** Supplied at 0.5 mg/ml in Tris saline, 0.02% sodium azide, pH7.3 with 0.5% bovine serum albumin.

**Unit Size** 100 µg

**Storage Instructions** Aliquot and store at -20°C. Minimize freezing and thawing.

**Synonym / Alias Names** KATP channel|KATP|potassium inwardly rectifying channel, subfamily J, member 11|AW491124|AI842722|mBIR|potassium inwardly-rectifying channel, subfamily J, member 11|Kir6.2|KCNJ11

**Accession ID** NP\_034732.1

**Blocking Peptide** EBP07766

**Immunogen** Peptide with sequence ERRARFVSKKGNC, from the internal region (near the N Terminus) of the protein sequence according to NP\_034732.1.

**Peptide Sequence** ERRARFVSKKGNC

**Purification Method** Purified from goat serum by ammonium sulphate precipitation followed by antigen affinity chromatography using the immunizing peptide.

**Shipping Instructions** Refrigerated

<b>Predicted Species</b>	Human, Mouse, Rat, Dog
<b>Reactive Species</b>	Human
<b>Human Gene ID</b>	3767
<b>Mouse Gene ID</b>	16514
<b>Rat Gene ID</b>	83535
<b>Product Grade</b>	<a href="https://prod-vector-labs-pimcore-assets.s3.us-east-1.amazonaws.com/assets/products/image/elite_medium.png">https://prod-vector-labs-pimcore-assets.s3.us-east-1.amazonaws.com/assets/products/image/elite_medium.png</a>
<b>IHC Results</b>	In paraffin embedded Human Pancreas shows variable staining across the islet of Langerhans. Recommended concentration, 3-5µg/ml.
<b>ELISA Detection Limit</b>	Antibody detection limit dilution 1:64000.
<b>Western Blot</b>	Approx 45kDa band observed in Human Skeletal Muscle lysates (calculated MW of 43.6kDa according to NP_034732.1). Recommended concentration: 0.01-0.03µg/ml.
<b>Application Type</b>	Pep-ELISA, WB, IHC

## DOCUMENTS

- [Data Sheet](#)

## GALLERY IMAGES

